

## Section 5. Injury and the Prevention

### Section 5.3 Injury-related hospitalization

Data Source: IntelliHEALTH Database – Ontario Ministry of Health and Long-Term Care (MOHLTC)

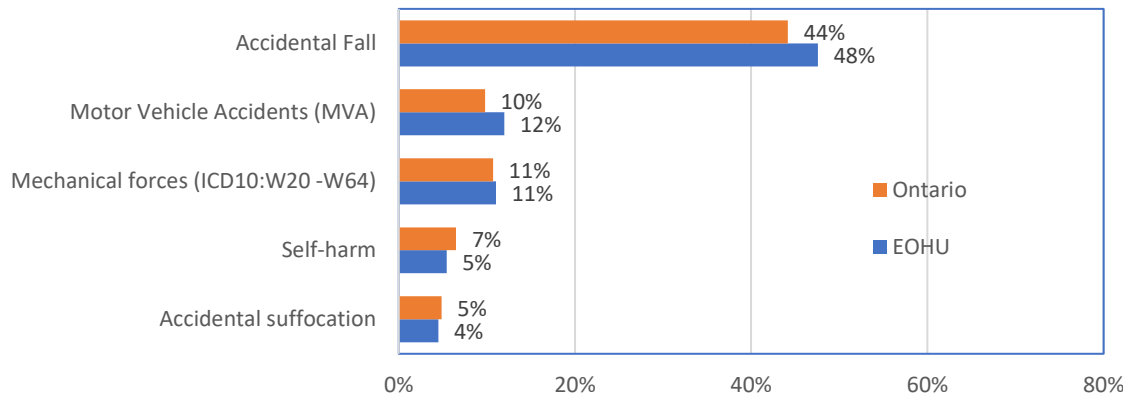
Updated Jan. 2020

#### Leading Causes for Injury-related Hospitalization

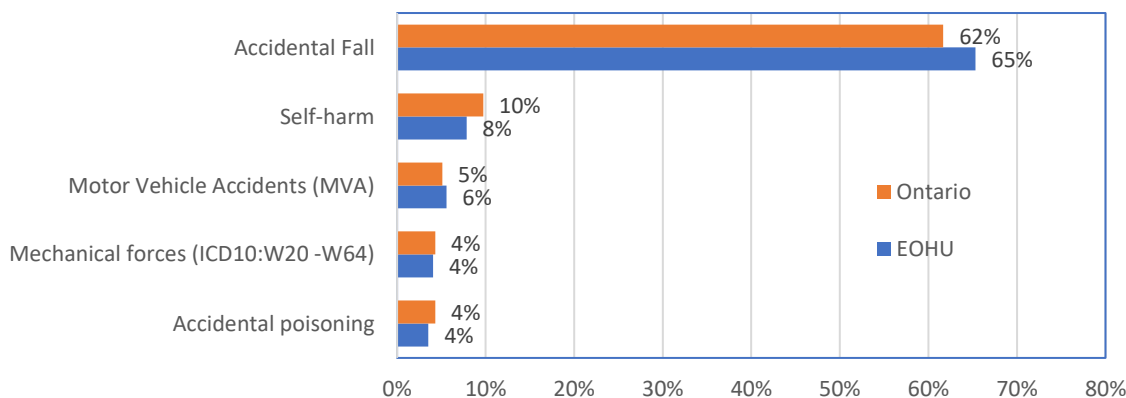
	No.	All Age	#		%		p*	
			EOHU	Ontario	EOHU	Ontario	EOHU	Ontario
<b>Male</b>	5	Accidental suffocation	315	19469	4%	5%	0.3	0.3
	4	Self-harm	381	26020	5%	7%	0.4	0.4
	3	Mechanical forces (ICD10:W20 -	774	42778	11%	11%	0.8	0.7
	2	Motor Vehicle Accidents (MVA)	840	39142	12%	10%	0.8	0.6
	1	Accidental Fall	3338	176422	48%	44%	3.4	3.0
		Total Injury	7018	399418	100%	100%	7.1	6.5
<b>Female</b>	5	Accidental poisoning	275	18924	4%	4%	0.3	0.3
	4	Mechanical forces (ICD10:W20 -	316	18957	4%	4%	0.3	0.3
	3	Motor Vehicle Accidents (MVA)	435	22386	6%	5%	0.4	0.3
	2	Self-harm	611	42741	8%	10%	0.6	0.6
	1	Accidental Fall	5081	270943	65%	62%	3.9	3.5
		Total Injury	7780	439307	100%	100%	6.4	5.9

P\*: Age Standardized Rate (per 1,000 population)

Leading Causes for Injury related Hospital discharge,  
All Age, Male, 2008-2017

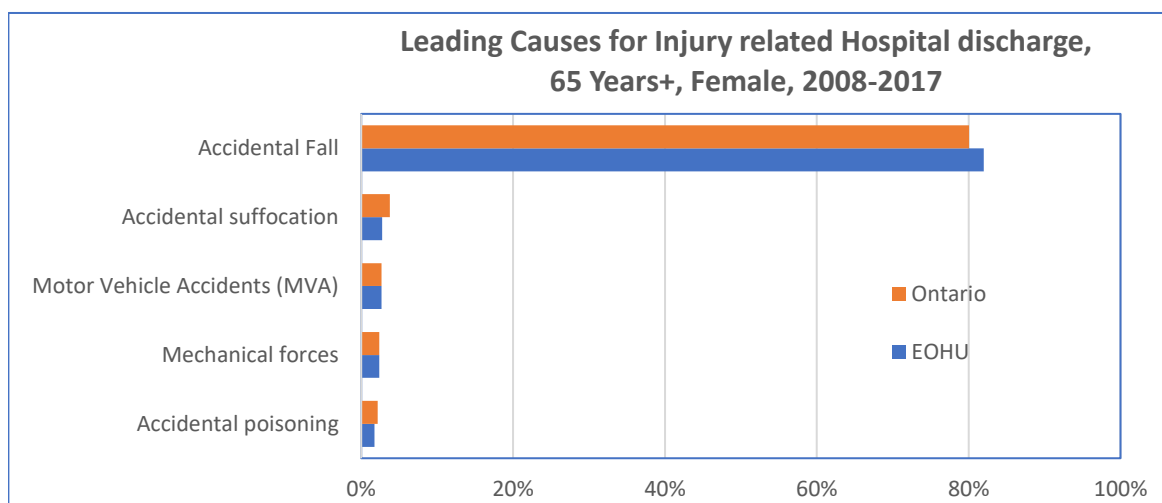
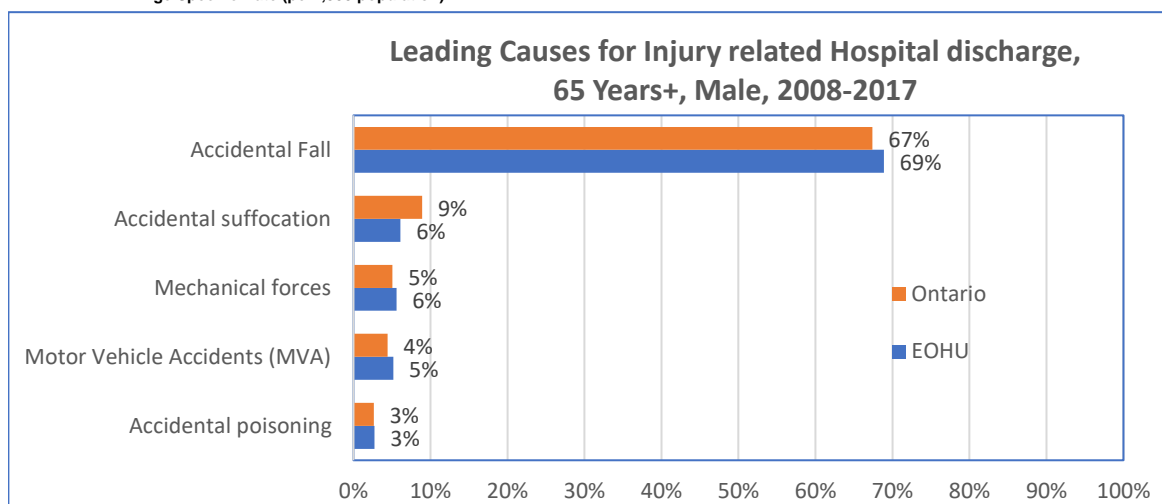


Leading Causes for Injury related Hospital discharge,  
All Age, Female, 2008-2017



		65 Years+	#		%		p*	
			EOHU	Ontario	EOHU	Ontario	EOHU	Ontario
<b>Male</b>	5	Accidental poisoning	78	4042	3%	3%	0.5	0.4
	4	Motor Vehicle Accidents (MVA)	147	6819	5%	4%	0.9	0.8
	3	Mechanical forces	159	7754	6%	5%	1.0	0.9
	2	Accidental suffocation	174	13697	6%	9%	1.1	1.5
	1	Accidental Fall	1962	103510	69%	67%	12.1	11.5
		Total Injury	2848	153583	100%	100%	17.6	17.0
<b>Female</b>	5	Accidental poisoning	86	5703	2%	2%	0.4	0.5
	4	Mechanical forces	116	6278	2%	2%	0.6	0.6
	3	Motor Vehicle Accidents (MVA)	132	7074	3%	3%	0.7	0.6
	2	Accidental suffocation	135	9914	3%	4%	0.7	0.9
	1	Accidental Fall	4020	210561	82%	80%	20.8	18.7
		Total Injury	4902	263035	100%	100%	25.4	23.4

P\*:Age Specific Rate (per1,000 population)



# Injury-Related Hospitalization

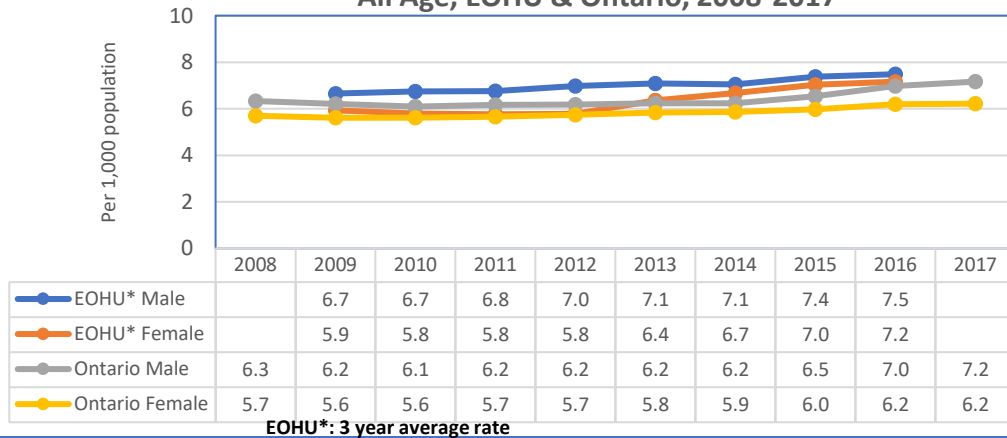
Description

	All Age				65+			
	Age Standardized Rate (1,000 population)				Age Specific Rate (1,000 population)			
	EOHU*		Ontario		EOHU*		Ontario	
	Male	Female	Male	Female	Male	Female	Male	Female
2008			6.3	5.7			14.9	22.2
2009	6.7	5.9	6.2	5.6	14.8	23.6	15.0	22.1
2010	6.7	5.8	6.1	5.6	15.4	23.4	14.7	22.4
2011	6.8	5.8	6.2	5.7	16.3	23.3	15.6	23.0
2012	7.0	5.8	6.2	5.7	17.6	23.4	15.5	23.0
2013	7.1	6.4	6.2	5.8	18.4	26.1	16.2	23.3
2014	7.1	6.7	6.2	5.9	18.1	27.8	16.5	23.5
2015	7.4	7.0	6.5	6.0	18.9	27.9	18.3	23.8
2016	7.5	7.2	7.0	6.2	19.3	27.1	20.0	24.6
2017			7.2	6.2			21.2	24.8

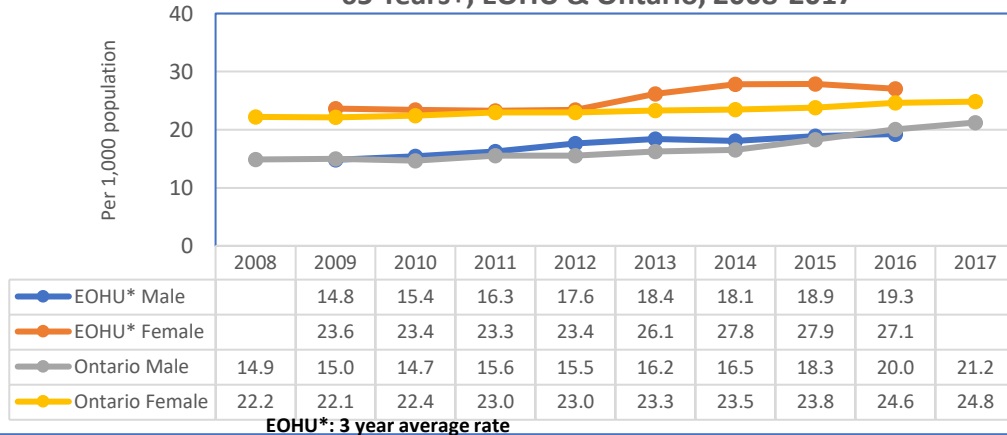
EOHU\*: 3 year average rate

Compared to Provincial average,  $P < 0.05$

### Age Standardized Rate for Injury-Related Hospitalization, All Age, EOHU & Ontario, 2008-2017



### Age Standardized Rate for Injury-Related Hospitalization, 65 Years+, EOHU & Ontario, 2008-2017

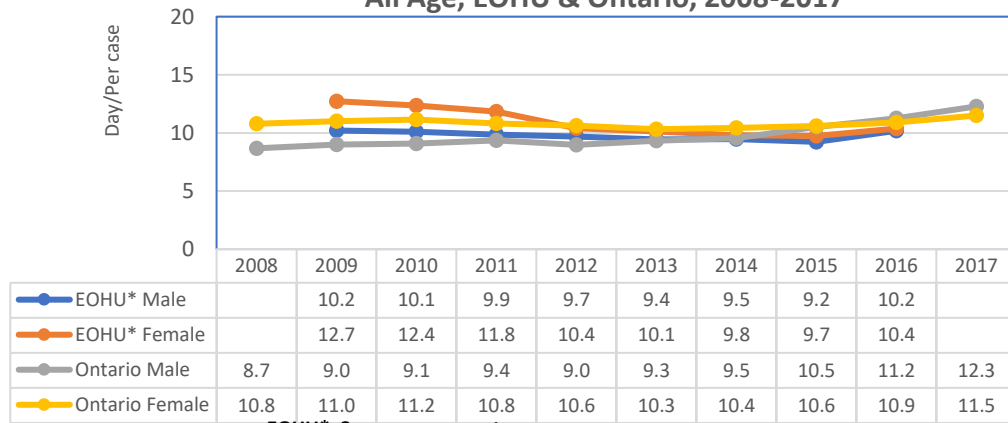


## Average Length of Stay in Injury-Related hospital discharge (per Cases)

	All Age				65+			
	EOHU*		Ontario		EOHU*		Ontario	
	Male	Female	Male	Female	Male	Female	Male	Female
2008			8.7	10.8			16.0	15.1
2009	10.2	12.7	9.0	11.0	15.5	16.2	16.0	15.2
2010	10.1	12.4	9.1	11.2	14.9	15.4	16.4	15.2
2011	9.9	11.8	9.4	10.8	14.4	14.5	15.7	14.4
2012	9.7	10.4	9.0	10.6	13.3	12.7	15.1	14.0
2013	9.4	10.1	9.3	10.3	12.7	11.9	14.9	13.5
2014	9.5	9.8	9.5	10.4	12.0	11.6	14.8	13.3
2015	9.2	9.7	10.5	10.6	12.4	11.4	15.7	13.3
2016	10.2	10.4	11.2	10.9	13.5	12.2	16.1	13.7
2017			12.3	11.5			17.4	14.3

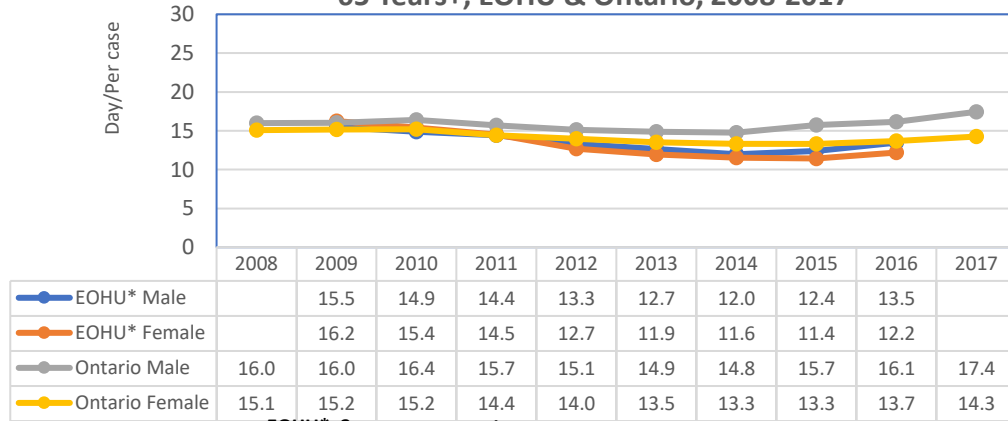
EOHU\*: 3 year average rate

### Average Length of Stay in Injury-Related Hospitalization, All Age, EOHU & Ontario, 2008-2017



EOHU\*: 3 year average rate

### Average Length of Stay in Injury-Related Hospitalization, 65 Years+, EOHU & Ontario, 2008-2017



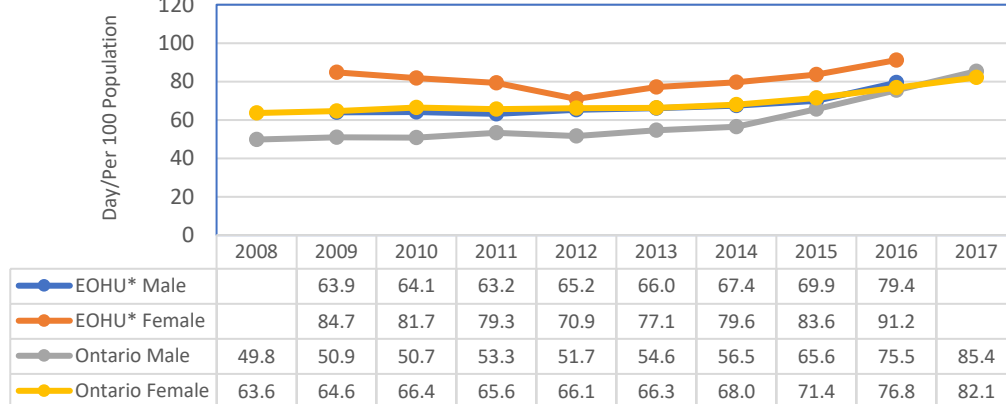
EOHU\*: 3 year average rate

## Average Days of Stay in Injury-Related hospital discharge (per 100 Population)

	All Age				65+			
	EOHU*		Ontario		EOHU*		Ontario	
	Male	Female	Male	Female	Male	Female	Male	Female
2008			49.8	63.6			238.1	334.7
2009	63.9	84.7	50.9	64.6	229.5	384.1	239.8	335.3
2010	64.1	81.7	50.7	66.4	229.4	361.0	241.0	340.9
2011	63.2	79.3	53.3	65.6	234.6	337.7	244.1	330.8
2012	65.2	70.9	51.7	66.1	234.8	297.8	234.4	320.7
2013	66.0	77.1	54.6	66.3	233.2	312.1	241.7	314.7
2014	67.4	79.6	56.5	68.0	216.7	321.5	243.8	312.8
2015	69.9	83.6	65.6	71.4	234.3	318.6	287.9	317.3
2016	79.4	91.2	75.5	76.8	259.2	329.7	323.4	336.0
2017			85.4	82.1			370.5	353.9

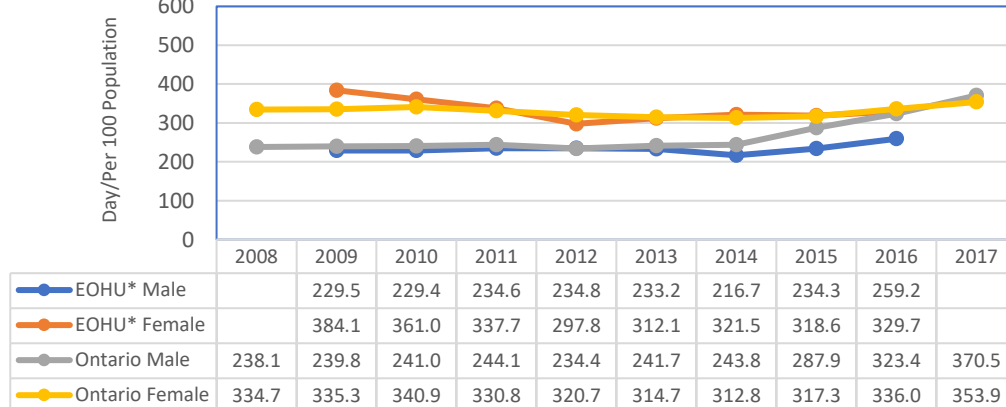
EOHU\*: 3 year average rate

### Average Days of Stay in Injury-Related Hospitalization, 65 Years+, EOHU & Ontario, 2008-2017



EOHU\*: 3 year average rate

### Average Days of Stay in Injury-Related Hospitalization, 65 Years+, EOHU & Ontario, 2008-2017



EOHU\*: 3 year average rate

# Accidental Fall-Related Hospitalization

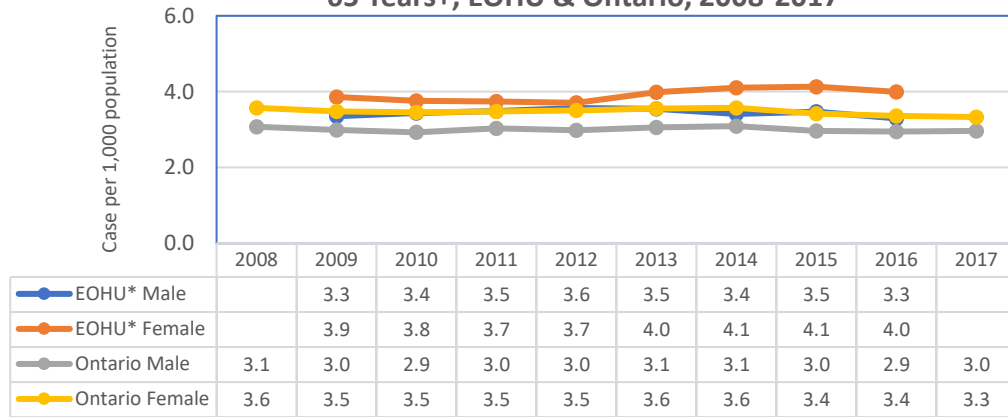
Description

	All Age				65+			
	Age Standardized Rate (1,000 population)				Age Specific Rate (1,000 population)			
	EOHU*		Ontario		EOHU*		Ontario	
	Male	Female	Male	Female	Male	Female	Male	Female
2008			3.1	3.6			11.1	18.5
2009	3.3	3.9	3.0	3.5	10.8	20.3	11.0	18.4
2010	3.4	3.8	2.9	3.5	11.5	20.1	10.8	18.6
2011	3.5	3.7	3.0	3.5	12.1	20.0	11.4	19.1
2012	3.6	3.7	3.0	3.5	13.0	19.9	11.2	19.0
2013	3.5	4.0	3.1	3.6	13.3	21.5	11.7	19.3
2014	3.4	4.1	3.1	3.6	12.9	22.5	12.1	19.3
2015	3.5	4.1	3.0	3.4	12.7	22.2	11.7	18.5
2016	3.3	4.0	2.9	3.4	12.0	21.1	11.6	18.3
2017			3.0	3.3			11.9	18.1

EOHU\*: 3 year average rate

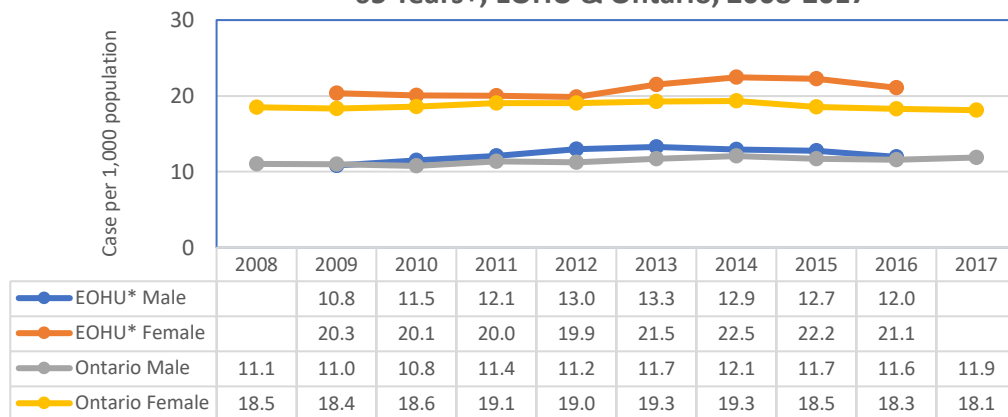
Compared to Provincial average,  $P < 0.05$

### Age Standardized Rate for Full-Related Hospitalization, 65 Years+, EOHU & Ontario, 2008-2017



EOHU\*: 3 year average rate

### Age Specific Rate for Full-Related Hospitalization, 65 Years+, EOHU & Ontario, 2008-2017



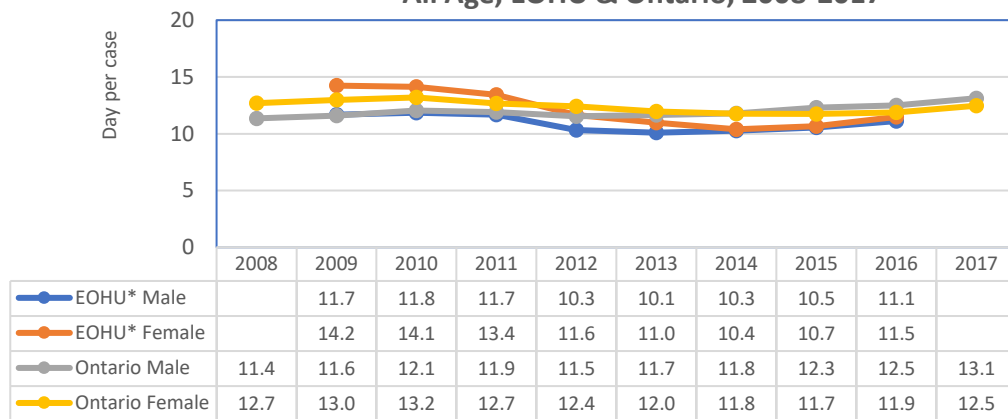
EOHU\*: 3 year average rate

## Average Length of Stay in Fall-related hospital discharge (Day per case)

	All Age				65+			
	EOHU*		Ontario		EOHU*		Ontario	
	Male	Female	Male	Female	Male	Female	Male	Female
2008			11.4	12.7			16.5	15.3
2009	11.7	14.2	11.6	13.0	15.7	16.1	16.4	15.2
2010	11.8	14.1	12.1	13.2	15.3	15.8	17.2	15.5
2011	11.7	13.4	11.9	12.7	14.8	15.0	16.3	14.6
2012	10.3	11.6	11.5	12.4	12.8	13.0	15.6	14.1
2013	10.1	11.0	11.7	12.0	12.0	12.0	15.2	13.7
2014	10.3	10.4	11.8	11.8	11.7	11.3	15.2	13.3
2015	10.5	10.7	12.3	11.7	12.5	11.3	15.4	13.1
2016	11.1	11.5	12.5	11.9	13.0	12.2	15.6	13.3
2017			13.1	12.5			16.0	13.8

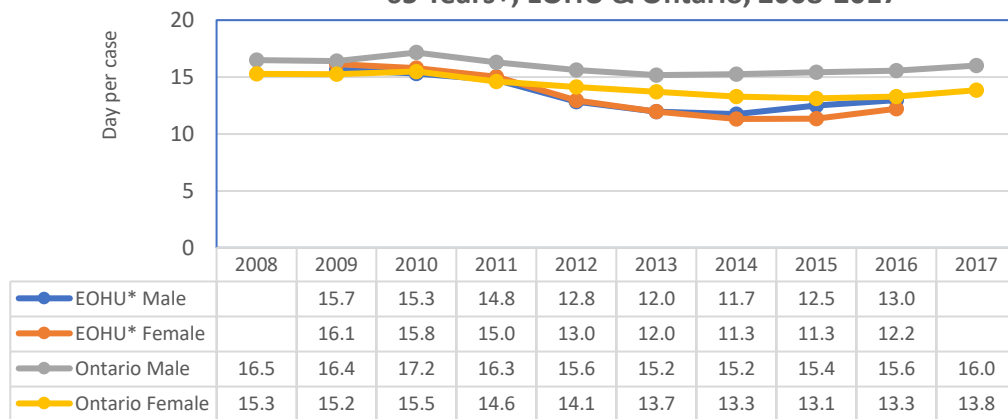
EOHU\*: 3 year average rate

### Average Length of Stay in Full-Related Hospitalization, All Age, EOHU & Ontario, 2008-2017



EOHU\*: 3 year average rate

### Average Length of Stay in Full-Related Hospitalization, 65 Years+, EOHU & Ontario, 2008-2017



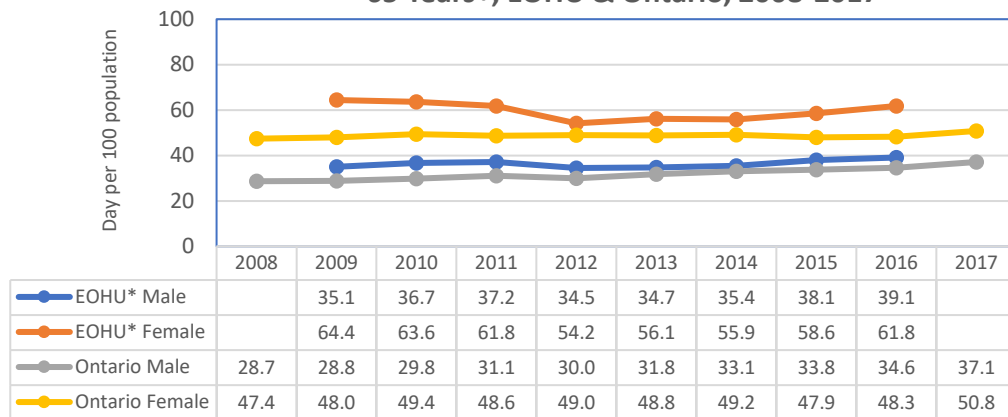
EOHU\*: 3 year average rate

## Average Days of Stay in Fall-related hospital discharge (per 100 Population)

	All Age				65+			
	EOHU*		Ontario		EOHU*		Ontario	
	Male	Female	Male	Female	Male	Female	Male	Female
2008			28.7	47.4			182.4	282.6
2009	35.1	64.4	28.8	48.0	169.3	328.2	180.3	279.7
2010	36.7	63.6	29.8	49.4	175.9	316.8	184.7	288.0
2011	37.2	61.8	31.1	48.6	178.1	301.0	185.5	278.2
2012	34.5	54.2	30.0	49.0	166.5	257.3	175.2	269.1
2013	34.7	56.1	31.8	48.8	158.8	257.0	177.7	263.9
2014	35.4	55.9	33.1	49.2	151.7	254.1	183.9	256.8
2015	38.1	58.6	33.8	47.9	159.1	252.4	180.5	243.2
2016	39.1	61.8	34.6	48.3	155.3	257.3	180.4	243.0
2017			37.1	50.8			190.0	250.9

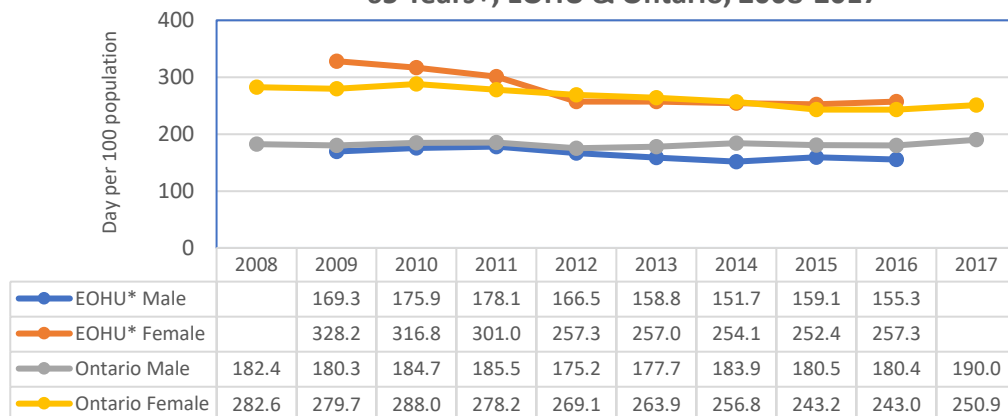
EOHU\*: 3 year average rate

### Average Day of Stay in Full-Related Hospitalization, 65 Years+, EOHU & Ontario, 2008-2017



EOHU\*: 3 year average rate

### Average Day of Stay in Full-Related Hospitalization, 65 Years+, EOHU & Ontario, 2008-2017



EOHU\*: 3 year average rate