

Health Indicators

Section 1. Population

Data source: Census 2021

Updated: January 2023

[Description](#)

1.01. Population by Age and Sex

Table 01. Population by Age Groups, EOHU vs. Ontario, Census 2021

Age Groups	EOHU		Ontario	
	Male	Female	Male	Female
0-4	5.3%	4.8%	5.0%	4.6%
5-9	5.8%	5.4%	5.6%	5.1%
10-14	5.8%	5.4%	5.9%	5.4%
15-19	5.3%	4.8%	5.9%	5.3%
20-24	4.8%	4.3%	6.7%	5.9%
25-29	5.7%	5.3%	7.1%	6.6%
30-34	6.0%	6.0%	7.0%	6.8%
35-39	5.9%	5.8%	6.6%	6.7%
40-44	5.6%	5.5%	6.1%	6.4%
45-49	5.7%	5.9%	6.2%	6.4%
50-54	6.4%	6.5%	6.5%	6.7%
55-59	8.5%	8.4%	7.3%	7.3%
60-64	8.3%	8.3%	6.7%	6.9%
65-69	7.0%	7.2%	5.5%	5.9%
70-74	6.0%	6.1%	4.7%	5.0%
75-79	3.9%	4.3%	3.1%	3.5%
80-84	2.4%	2.8%	2.1%	2.5%
85+	1.8%	3.1%	1.8%	2.9%

Figure 01. Population Pyramid, EOHU Area vs. Ontario, Census 2021

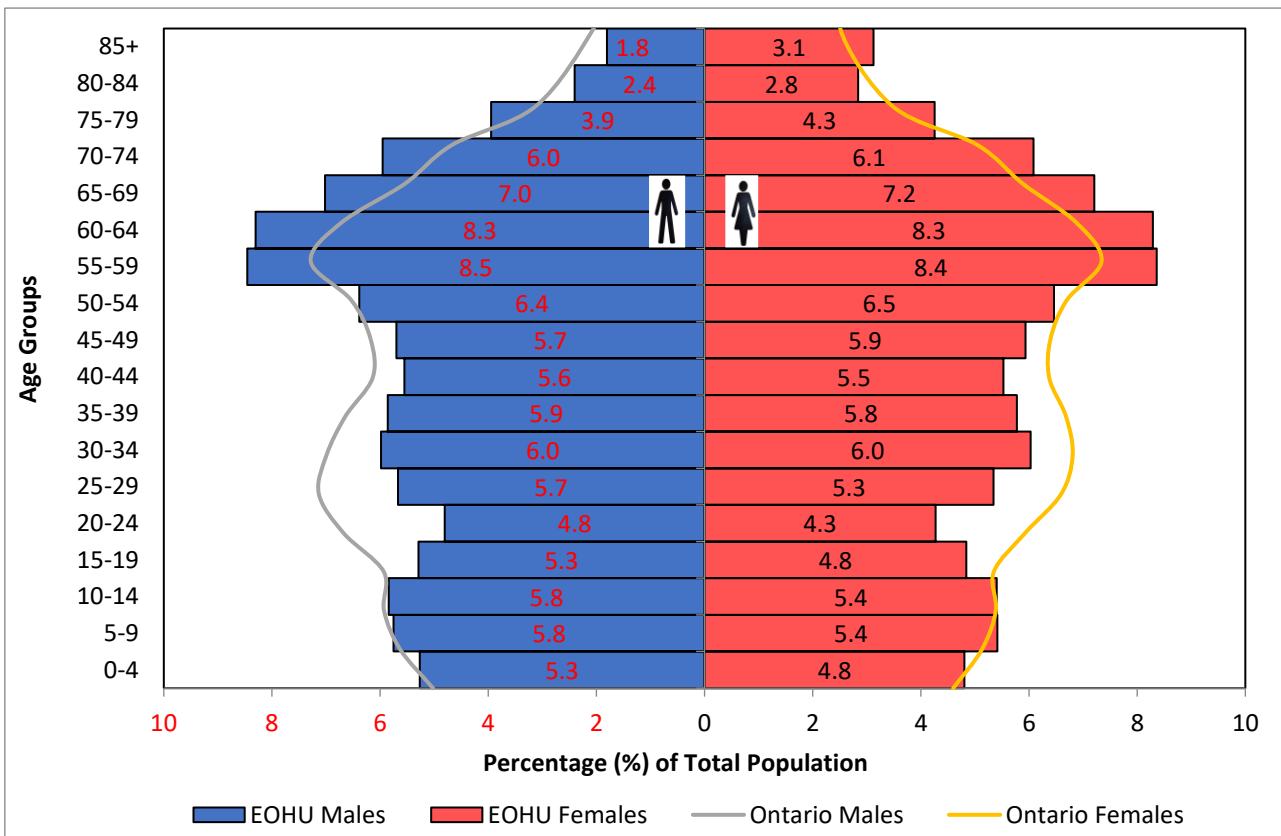


Table 02. Population in EOHU Area vs. Ontario & Canada

	Men		Women		Total	
	#	%	#	%	#	%
Canada	18226240	49.3%	18765740	50.7%	36991980	100%
Ontario	6970855	49.0%	7253085	51.0%	14223945	100%
EOHU	103850	49.4%	106430	50.6%	210275	100%
United Counties						
UC-PR	47350	49.5%	48290	50.5%	95640	100%
UC-SDG	56500	49.3%	58140	50.7%	114635	100%
Municipalities						
Russell TP	9670	49.3%	9930	50.7%	19595	100%
Casselman	1955	49.4%	2000	50.5%	3960	100%
Clarence-Rockland	13060	49.3%	13445	50.7%	26505	100%
The Nation Municipality	6775	50.7%	6575	49.3%	13350	100%
Alfred & Plantagenet	4925	49.5%	5020	50.5%	9945	100%
Champlain	4365	50.4%	4305	49.7%	8665	100%
East Hawkesbury	1770	51.8%	1645	48.2%	3415	100%
Hawkesbury	4820	47.3%	5370	52.7%	10195	100%
North Glengarry	5035	49.7%	5110	50.4%	10140	100%
South Glengarry	6705	50.3%	6620	49.7%	13330	100%
North Dundas	5610	49.6%	5695	50.4%	11305	100%
South Dundas	5440	49.3%	5610	50.8%	11045	100%
North Stormont	3765	50.9%	3635	49.1%	7400	100%
South Stormont	6865	50.6%	6705	49.4%	13570	100%
Cornwall	23075	48.2%	24765	51.8%	47845	100%

If you require this information in an alternate format, please call 1-800-267-7120 and press 0.

Si les renseignements sont requis dans un autre format, veuillez appeler au 1 800 267-7120 et faire le 0.