

Health Indicators

Section 4. Chronic Disease and Cancer

Data source: *intelliHEALTH Database – Ontario Ministry of Health and Long-Term Care (MOHLTC)* Updated: August, 2024

[Description](#)

Section 4A Chronic Diseases

4A.01. All Chronic Diseases Mortality, 2013-2022

Table 01. Proportion of Chronic Diseases Deaths in Total Deaths (%), 2013-2022

	EOHU		Ontario	
	Male	Female	Male	Female
00-09	3.7	8.9	4.8	4.3
10-19	10.7	15.0	13.7	18.3
20-34	17.0	28.0	11.1	21.6
35-44	38.2	54.1	28.8	46.8
45-54	61.1	72.8	53.1	63.3
55-64	71.7	73.9	68.4	71.9
65-74	74.9	77.2	72.3	72.5
75-84	68.3	64.8	66.3	63.3
85+	57.7	50.4	54.2	48.1
65+	66.8	60.1	63.2	56.6
All Ages	65.6	61.2	60.6	57.2

Figure 01. Proportion of Deaths due to Chronic Diseases in Total Deaths (%), EOHU & Ontario, 2013-2022

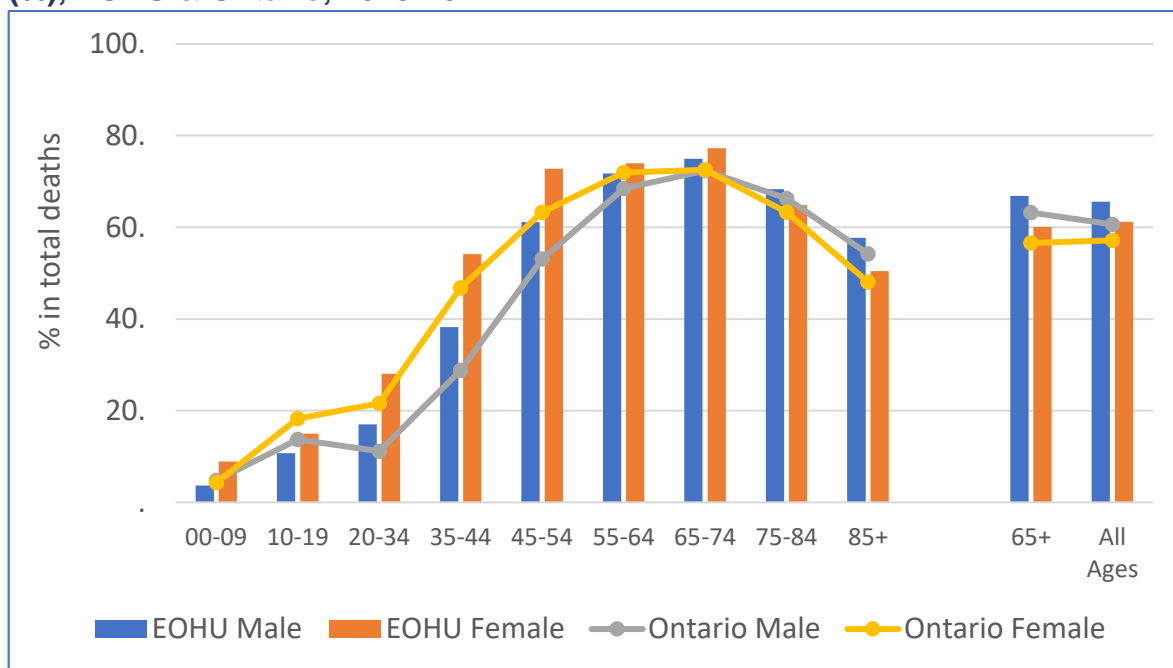


Table 02. Age Specific Mortality Rate (Per 100,000 Population) due to Chronic Diseases, EOHU & Ontario, 2013-2022

	EOHU		Ontario	
	Male	Female	Male	Female
00-09	1.8	3.7	2.7	2.1
10-19	2.5	2.6	3.3	2.6
20-34	13.3	12.2	9.3	8.6
35-44	61.6	48.2	40.6	36.6
45-54	193.6	162.2	155.2	115.2
55-64	615.3	413.9	497.2	321.1
65-74	1498.6	1071.3	1212.2	782.3
75-84	3558.0	2292.1	2926.4	1939.1
85+	8518.9	6539.1	7658.8	5706.5
65+	2751.2	2231.2	2404.6	1894.2
All Ages	657.0	575.2	466.9	411.8
S-Rate*	581.6	405.6	487.443	328.416

Compared with Ontario average: P < 0.05

S-Rate*: Age standardized mortality rate for All Ages (per 100,000 population).

Figure 02. Age Specific Mortality Rate due to Chronic Diseases, EOHU & Ontario, 2013-2022

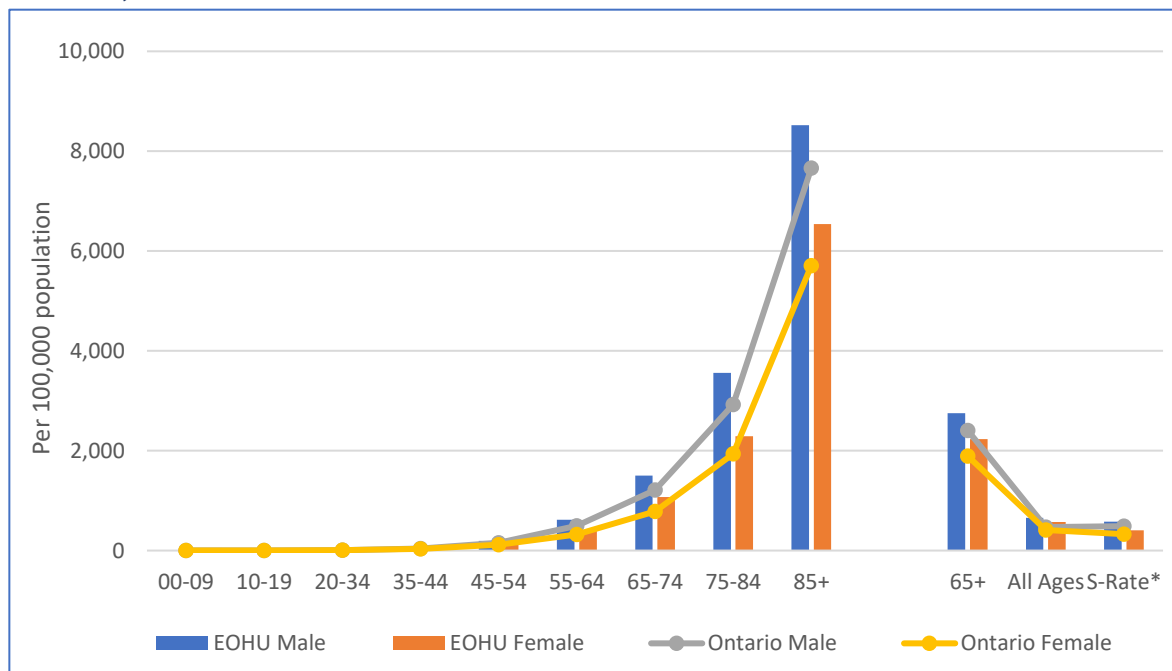


Table 03. Leading Causes of Chronic Diseases Deaths, All Ages, Male, EOHU & Ontario, 2013-2022

No	All Ages, Male	#		%	
		EOHU	Ontario	EOHU	Ontario
1	Ischemic heart disease	1679	77759	15.9%	14.4%
2	Lung cancer	890	35237	8.5%	6.5%
3	Chronic obstructive pulmonary disease	530	20882	5.0%	3.9%
4	Dementia	484	31858	4.6%	5.9%
5	Acute myocardial infarction	436	25961	4.1%	4.8%
6	Cerebrovascular diseases	384	21699	3.6%	4.0%
7	Diabetes mellitus	383	14743	3.6%	2.7%
8	Colorectal cancer	358	16223	3.4%	3.0%
9	Prostate cancer	288	16049	2.7%	3.0%
10	Pancreatic cancer	187	9987	1.8%	1.8%
	All of chronic disease deaths	6905	327621	65.6%	60.6%
	All deaths in male	10529	540359	100%	100%

Figure 03. Leading Causes of All Chronic Diseases Deaths, All Ages, Male, EOHU & Ontario, 2013-2022

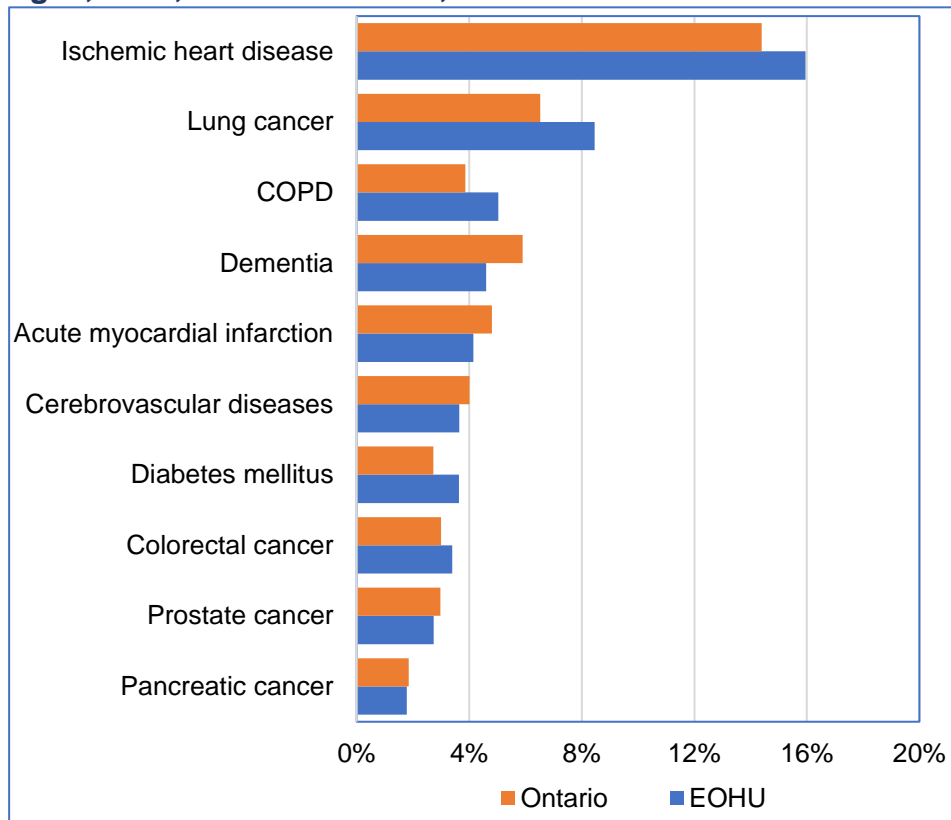


Table 04. Leading Causes of Chronic Diseases Deaths, All Ages, Female, EOHU & Ontario, 2013-2022

No	All ages, Female	#		%	
		EOHU	Ontario	EOHU	Ontario
1	Ischemic heart disease	1229	55912	12.3%	10.8%
2	Dementia	993	57261	9.9%	11.0%
3	Lung cancer	921	32188	9.2%	6.2%
4	Chronic obstructive pulmonary disease	591	21342	5.9%	4.1%
5	Cerebrovascular diseases	482	28873	4.8%	5.6%
6	Breast cancer	373	19797	3.7%	3.8%
7	Acute myocardial infarction	309	19370	3.1%	3.7%
8	Colorectal cancer	290	14014	2.9%	2.7%
9	Diabetes mellitus	266	11978	2.7%	2.3%
10	Alzheimer's disease	166	13382	1.7%	2.6%
	All of chronic diseases deaths	6135	296929	61.2%	57.2%
	All deaths in female	10026	519478	100%	100%

Figure 04. Leading Causes of Chronic Diseases Deaths, All Ages, Female, EOHU & Ontario, 2013-2022

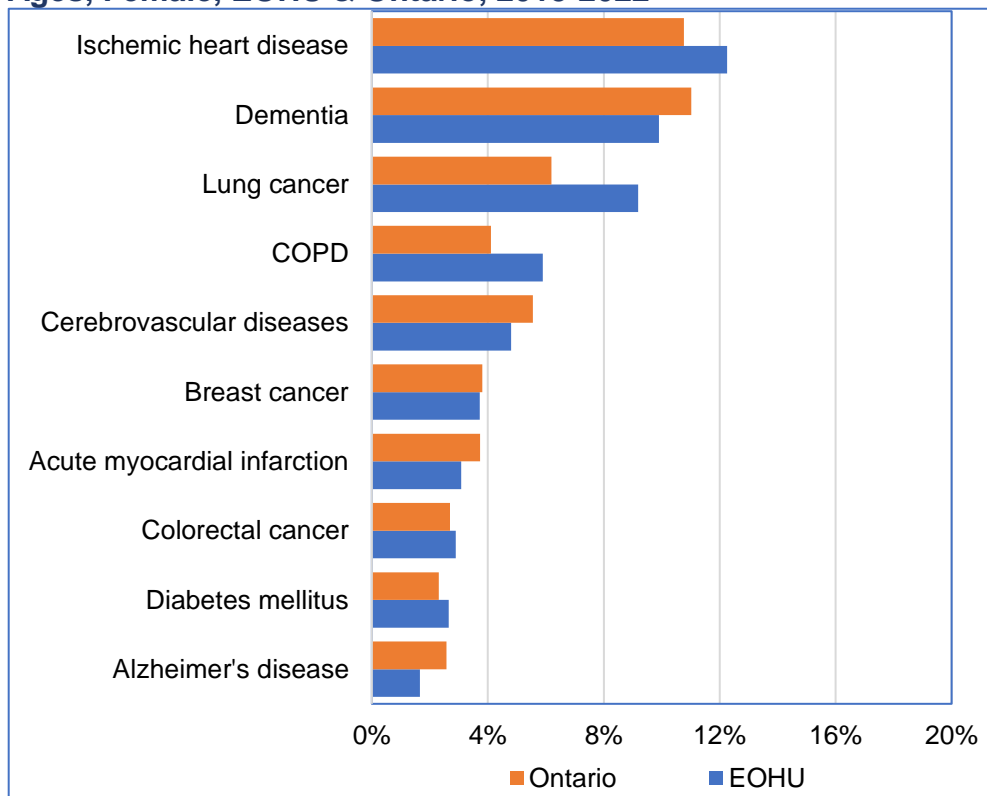


Table 05. Leading Causes of Chronic Diseases Deaths, 65 Years+, Male, EOHU & Ontario, 2013-2022

No	65 Years+, Male	#		%	
		EOHU	Ontario	EOHU	Ontario
1	Ischemic heart disease	1327	61343	16.2%	14.9%
2	Lung cancer	692	27842	8.5%	6.8%
3	Dementia	481	31629	5.9%	7.7%
4	Chronic obstructive pulmonary disease	457	18575	5.6%	4.5%
5	Acute myocardial infarction	349	20104	4.3%	4.9%
6	Cerebrovascular diseases	338	18907	4.1%	4.6%
7	Diabetes mellitus	293	11247	3.6%	2.7%
8	Colorectal cancer	279	12187	3.4%	3.0%
9	Prostate cancer	260	14856	3.2%	3.6%
10	Pancreatic cancer	140	7354	1.7%	1.8%
	All of chronic diseases deaths	5471	260023	66.8%	63.2%
	All deaths in male	8188	411575	100%	100%

Table 05. Leading Causes of Chronic Diseases Deaths, 65 Years+, Male, EOHU & Ontario, 2013-2022

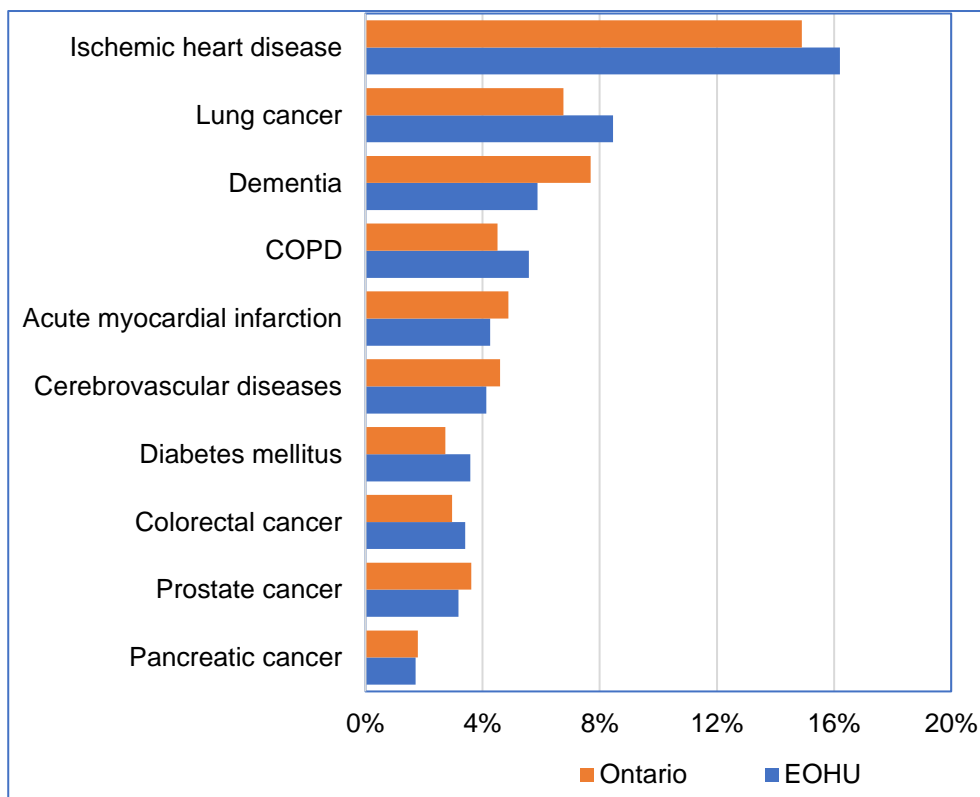
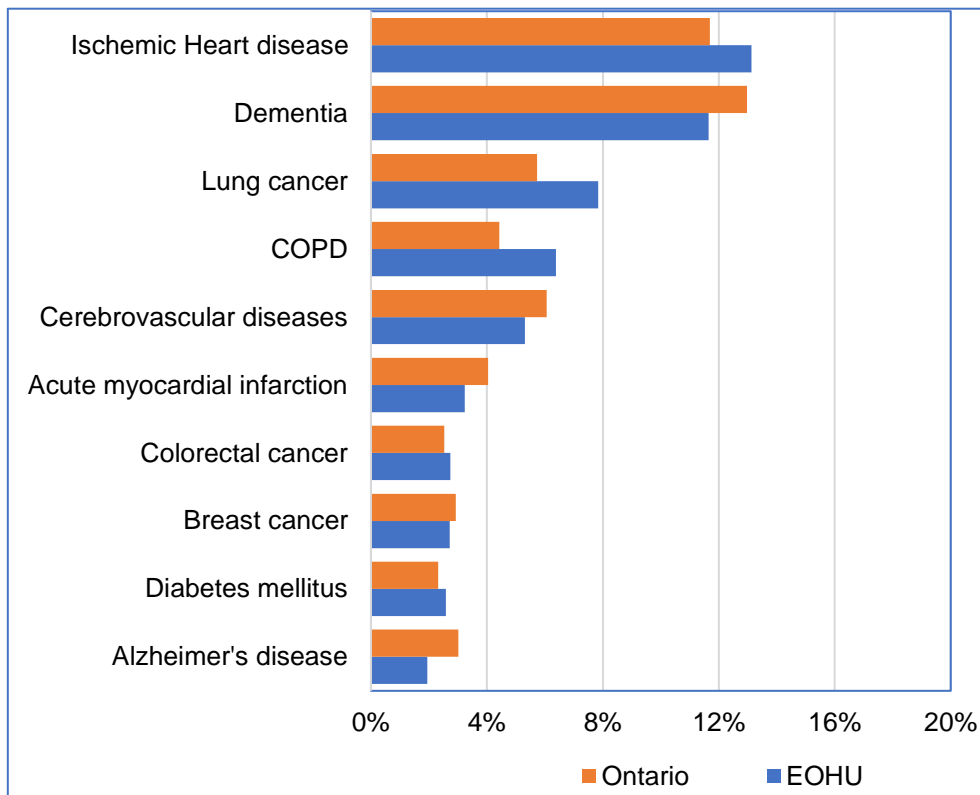


Table 06. Leading Causes of Chronic Diseases Deaths, 65 Years+, Female, EOHU & Ontario, 2013-2022

No	65 Years+, Female	#		%	
		EOHU	Ontario	EOHU	Ontario
1	Ischemic heart disease	1115	51419	13.1%	11.7%
2	Dementia	989	57033	11.6%	13.0%
3	Lung cancer	666	25207	7.8%	5.7%
4	Chronic obstructive pulmonary disease	542	19496	6.4%	4.4%
5	Cerebrovascular diseases	451	26665	5.3%	6.1%
6	Acute myocardial infarction	275	17754	3.2%	4.0%
7	Colorectal cancer	233	11112	2.7%	2.5%
8	Breast cancer	231	12865	2.7%	2.9%
9	Diabetes mellitus	219	10184	2.6%	2.3%
10	Alzheimer's disease	165	13274	1.9%	3.0%
	All of chronic diseases deaths	5102	248949	60.1%	56.6%
	All deaths in female	8492	439810	100%	100%

Table 06. Leading Causes of Deaths due to Chronic Diseases, 65 Years+, Female, EOHU & Ontario, 2013-2022



If you require this information in an alternate format, please call 1-800-267-7120 and press 0.

Si les renseignements sont requis dans un autre format, veuillez appeler au 1 800 267-7120 et faire le 0.