

Section 4. Chronic Disease and Cancer

Section 4.1 Chronic Disease Mortality (CDM)

Description

Data Source: IntelliHEALTH Database – Ontario Ministry of Health and Long-Term Care (MOHLTC)

Updated Jan.2020

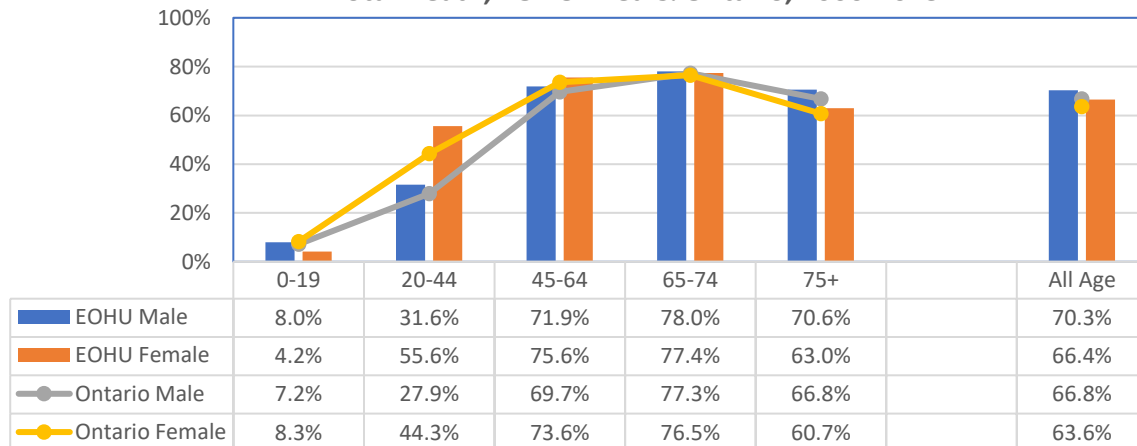
Proportion & Age-Specific Mortality Rate of Chronic Disease in Total Death

2006-2015	% of Chronic disease in total deaths				Age-Specific Mortality Rate			
	EOHU		Ontario		EOHU		Ontario	
	Male	Female	Male	Female	Male	Female	Male	Female
0-19	8.0%	4.2%	7.2%	8.3%	3.7	1.3	3.1	2.7
20-44	31.6%	55.6%	27.9%	44.3%	33.2	31.8	24.2	21.5
45-64	71.9%	75.6%	69.7%	73.6%	427.0	309.1	341.6	229.8
65-74	78.0%	77.4%	77.3%	76.5%	1684.1	1109.6	1389.0	879.8
75+	70.6%	63.0%	66.8%	60.7%	5463.6	4212.9	4746.2	3672.7
All Age	70.3%	66.4%	66.8%	63.6%	620.5	565.5	465.2	425.9
S-Rate*					681.6	453.6	573.8	383.0

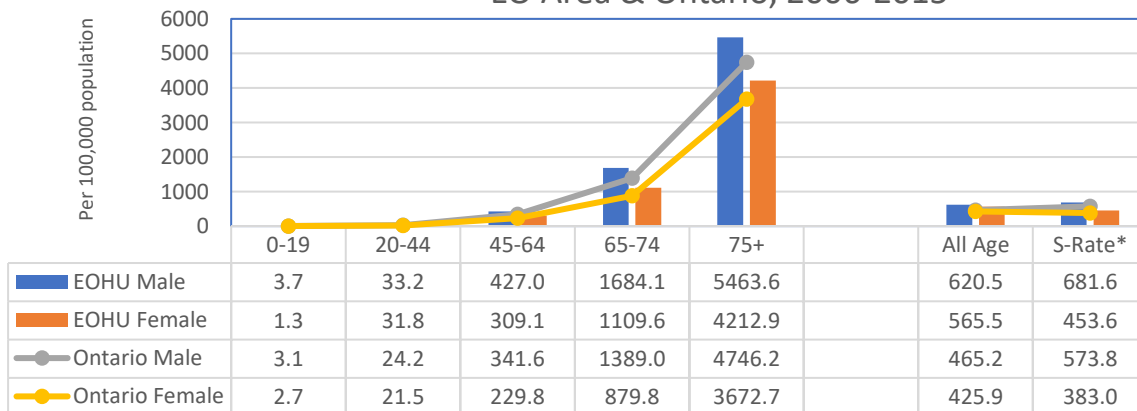
S-Rate*: Age standardized mortality rate (per 100,000 population).

Compared to provincial average level, P<0.05

Proportion of Deaths due to Chronic Disease in Total Death, EOHU Area & Ontario, 2006-2015



The Mortality Rate due to Chronic Diseases, EO Area & Ontario, 2006-2015



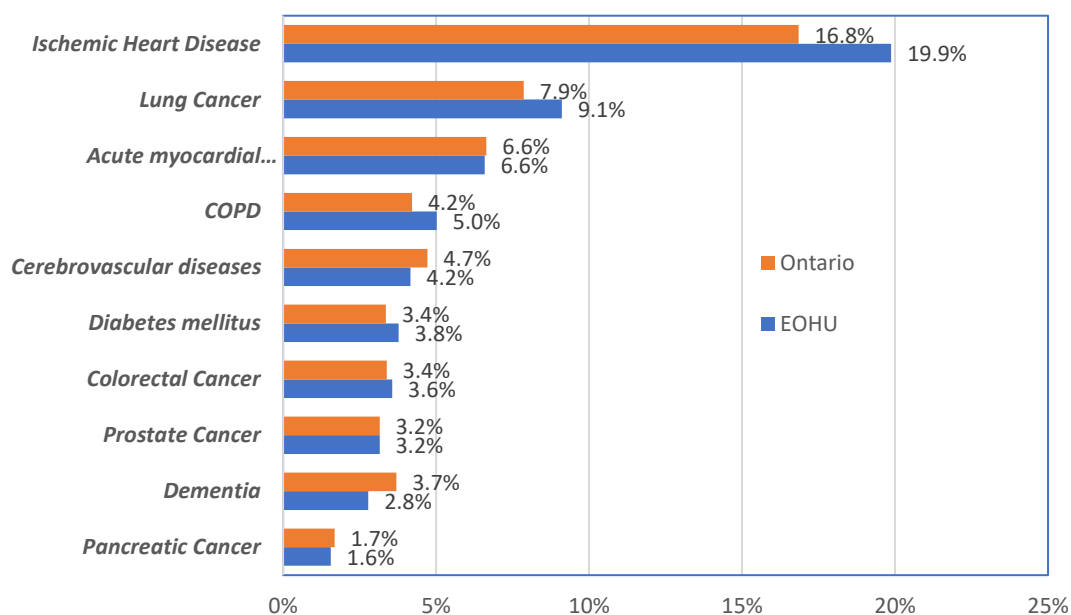
S-Rate*: Age standardized mortality rate

Leading Causes of Death due to Chronic Diseases

Male

No	Male	#		%	
		EOHU	Ontario	EOHU	Ontario
10	<i>Pancreatic Cancer</i>	138	7631	1.6%	1.7%
9	<i>Dementia</i>	246	16738	2.8%	3.7%
8	<i>Prostate Cancer</i>	279	14283	3.2%	3.2%
7	<i>Colorectal Cancer</i>	315	15341	3.6%	3.4%
6	<i>Diabetes mellitus</i>	334	15213	3.8%	3.4%
5	<i>Cerebrovascular diseases</i>	368	21359	4.2%	4.7%
4	<i>COPD</i>	444	19065	5.0%	4.2%
3	<i>Acute myocardial infarction</i>	582	30067	6.6%	6.6%
2	<i>Lung Cancer</i>	805	35598	9.1%	7.9%
1	<i>Ischemic Heart Disease</i>	1756	76245	19.9%	16.8%
	<i>All of Chronic Diseases</i>	6215	302344	70.3%	66.8%
	<i>All Cases</i>	8836	452575	100%	100%

Leading Causes of Death due to Chronic Diseases*, Male, EOHU area & Ontario, 2006-2015

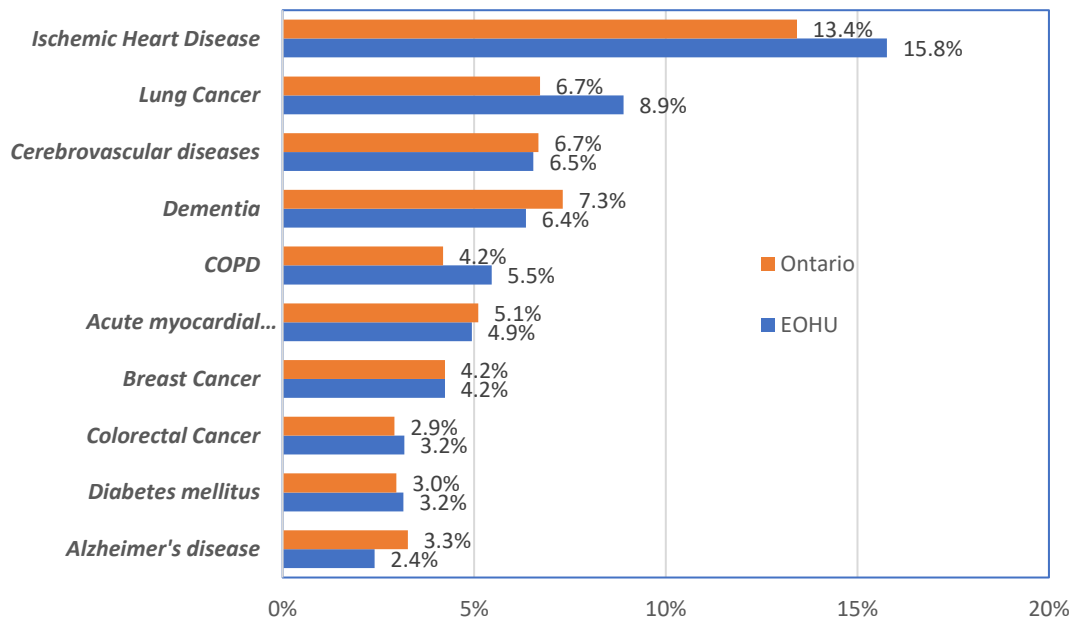


*The Proportion of chronic diseases in Total deaths

Female

No	Female	#		%	
		EOHU	Ontario	EOHU	Ontario
10	<i>Alzheimer's disease</i>	209	14692	2.4%	3.3%
9	<i>Diabetes mellitus</i>	274	13362	3.2%	3.0%
8	<i>Colorectal Cancer</i>	276	13134	3.2%	2.9%
7	<i>Breast Cancer</i>	368	19047	4.2%	4.2%
6	<i>Acute myocardial infarction</i>	429	22955	4.9%	5.1%
5	<i>COPD</i>	474	18845	5.5%	4.2%
4	<i>Dementia</i>	552	32884	6.4%	7.3%
3	<i>Cerebrovascular diseases</i>	569	30032	6.5%	6.7%
2	<i>Lung Cancer</i>	773	30196	8.9%	6.7%
1	<i>Ischemic Heart Disease</i>	1371	60366	15.8%	13.4%
	All of Chronic Diseases	5774	286003	66.4%	63.6%
	All Cases	8691	449694	100%	100%

Leading Causes of Death due to Chronic Diseases*, Female, EOHU area & Ontario, 2006-2015



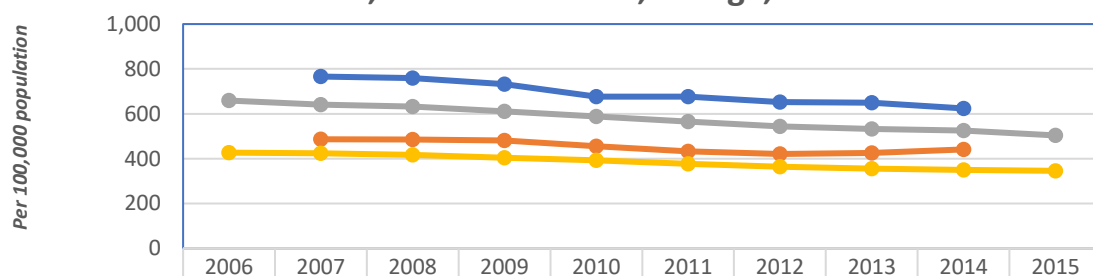
*The Proportion of chronic diseases in Total deaths

Age Standardized Mortality Rate (Per 100,000 population)

All Chronic Diseases

	S-Rate for All Age				ASMR for 65 Years & up			
	EOHU*		Ontario		EOHU*		Ontario	
	Male	Female	Male	Female	Male	Female	Male	Female
2006			659.0	426.7			3148.8	2478.1
2007	766.0	486.3	641.2	423.8	3645.0	2855.5	3096.5	2490.8
2008	759.0	485.0	633.0	417.1	3599.4	2876.5	3070.9	2451.4
2009	731.9	481.6	610.6	404.5	3437.7	2812.8	2990.0	2387.1
2010	677.1	455.0	588.5	392.5	3160.7	2637.9	2873.4	2325.2
2011	676.4	431.9	564.8	376.8	3123.5	2458.7	2777.2	2243.3
2012	652.8	420.9	543.9	363.9	2971.1	2396.4	2666.7	2126.1
2013	649.6	426.0	532.9	356.0	2966.3	2391.7	2600.6	2098.7
2014	623.9	440.9	524.8	349.4	2875.4	2451.3	2577.5	2038.4
2015			503.6	345.7			2470.5	2011.2

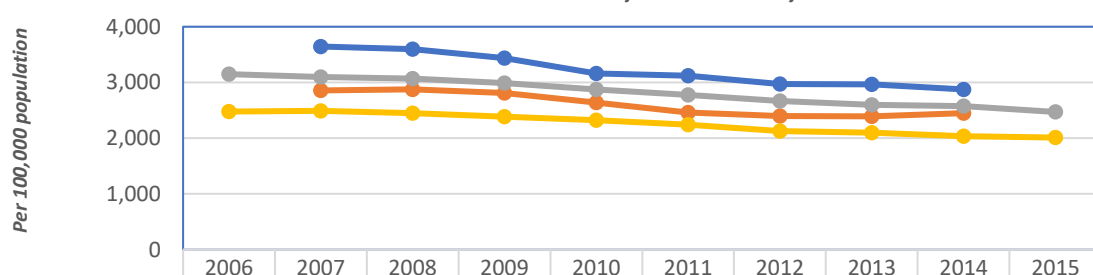
Age Standardized Mortality Rate for All Chronic Diseases
Deaths, EOHU & Ontario, All Age, 2006-2015



	2006	2007	2008	2009	2010	2011	2012	2013	2014	2015
EOHU* Male		766.0	759.0	731.9	677.1	676.4	652.8	649.6	623.9	
EOHU* Female		486.3	485.0	481.6	455.0	431.9	420.9	426.0	440.9	
Ontario Male	659.0	641.2	633.0	610.6	588.5	564.8	543.9	532.9	524.8	503.6
Ontario Female	426.7	423.8	417.1	404.5	392.5	376.8	363.9	356.0	349.4	345.7

EOHU*: Three year average rate in EOHU area

Age Specific Mortality Rate for All Chronic Diseases Deaths,
EOHU & Ontario, 65 Years+, 2006-2015



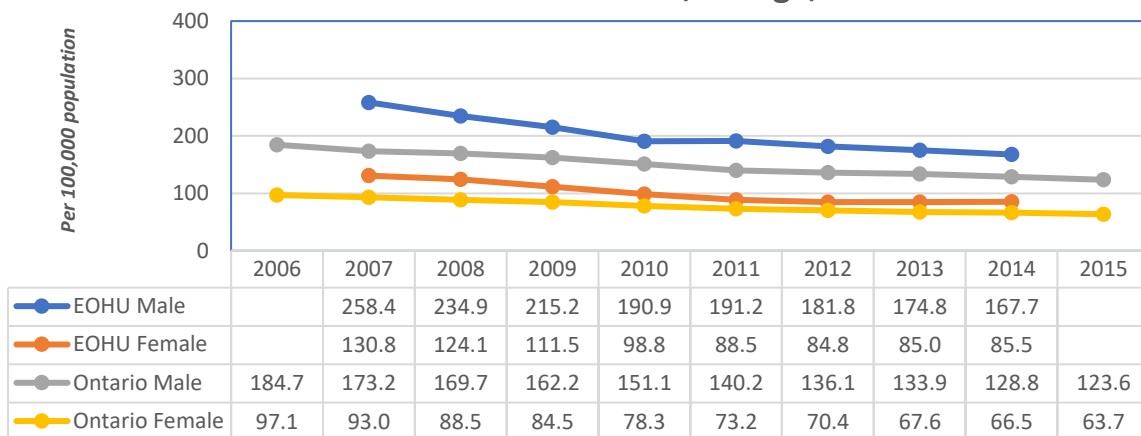
	2006	2007	2008	2009	2010	2011	2012	2013	2014	2015
EOHU* Male		3645.0	3599.4	3437.7	3160.7	3123.5	2971.1	2966.3	2875.4	
EOHU* Female		2855.5	2876.5	2812.8	2637.9	2458.7	2396.4	2391.7	2451.3	
Ontario Male	3148.8	3096.5	3070.9	2990.0	2873.4	2777.2	2666.7	2600.6	2577.5	2470.5
Ontario Female	2478.1	2490.8	2451.4	2387.1	2325.2	2243.3	2126.1	2098.7	2038.4	2011.2

EOHU*: Three year average rate in EOHU area

Ischemic Heart Disease

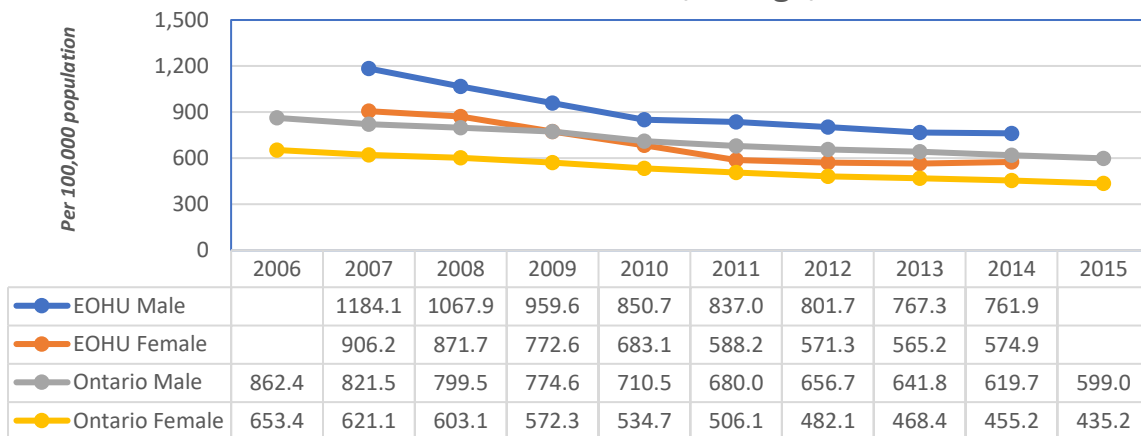
	S-Rate for All Age				ASMR for 65 Years & up			
	EOHU		Ontario		EOHU		Ontario	
	Male	Female	Male	Female	Male	Female	Male	Female
2006			184.7	97.1			862.4	653.4
2007	258.4	130.8	173.2	93.0	1184.1	906.2	821.5	621.1
2008	234.9	124.1	169.7	88.5	1067.9	871.7	799.5	603.1
2009	215.2	111.5	162.2	84.5	959.6	772.6	774.6	572.3
2010	190.9	98.8	151.1	78.3	850.7	683.1	710.5	534.7
2011	191.2	88.5	140.2	73.2	837.0	588.2	680.0	506.1
2012	181.8	84.8	136.1	70.4	801.7	571.3	656.7	482.1
2013	174.8	85.0	133.9	67.6	767.3	565.2	641.8	468.4
2014	167.7	85.5	128.8	66.5	761.9	574.9	619.7	455.2
2015			123.6	63.7			599.0	435.2

Age Standardized Mortality Rate for Ischemic Heart Disease, EOHU & Ontario, All Age, 2006-2015



EOHU*: Three year average rate in EOHU area

Age Standardized Mortality Rate for Ischemic Heart Disease, EOHU & Ontario, All Age, 2006-2015

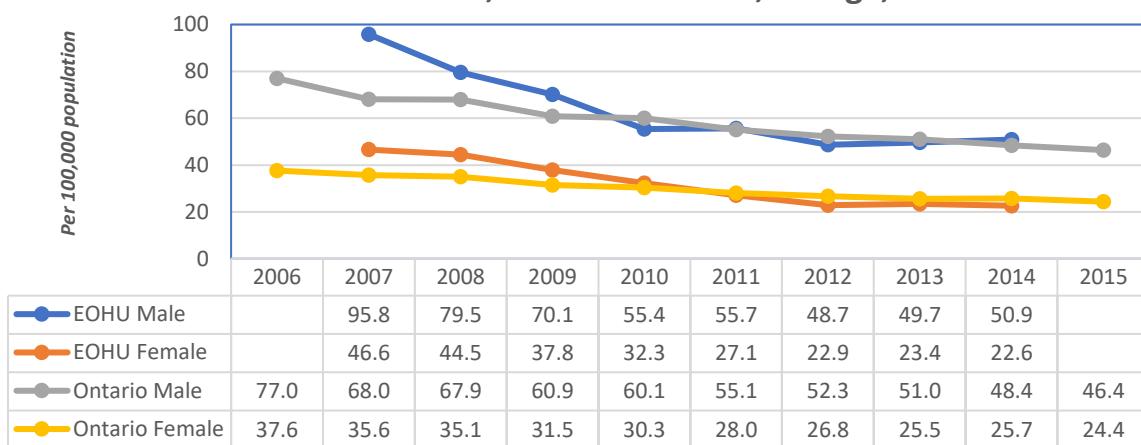


EOHU*: Three year average rate in EOHU area

Acute myocardial infarction

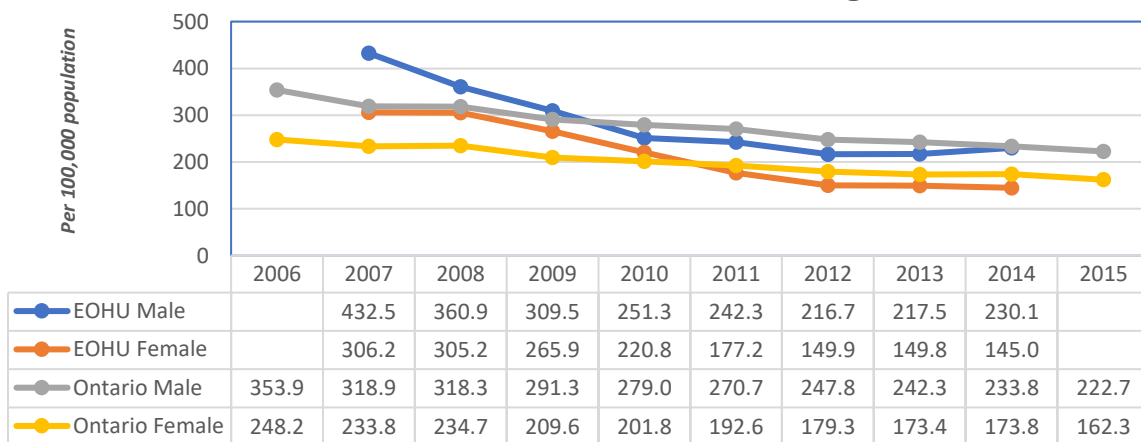
	S-Rate for All Age				ASMR for 65 Years & up			
	EOHU		Ontario		EOHU		Ontario	
	Male	Female	Male	Female	Male	Female	Male	Female
2006			77.0	37.6			353.9	248.2
2007	95.8	46.6	68.0	35.6	432.5	306.2	318.9	233.8
2008	79.5	44.5	67.9	35.1	360.9	305.2	318.3	234.7
2009	70.1	37.8	60.9	31.5	309.5	265.9	291.3	209.6
2010	55.4	32.3	60.1	30.3	251.3	220.8	279.0	201.8
2011	55.7	27.1	55.1	28.0	242.3	177.2	270.7	192.6
2012	48.7	22.9	52.3	26.8	216.7	149.9	247.8	179.3
2013	49.7	23.4	51.0	25.5	217.5	149.8	242.3	173.4
2014	50.9	22.6	48.4	25.7	230.1	145.0	233.8	173.8
2015			46.4	24.4			222.7	162.3

Age Standardized Mortality Rate for Acute myocardial infarction, EOHU & Ontario, All Age, 2006-2015



EOHU*: Three year average rate in EOHU area

Age Standardized Mortality Rate for Acute myocardial infarction, EOHU & Ontario, All Age, 2006-2015

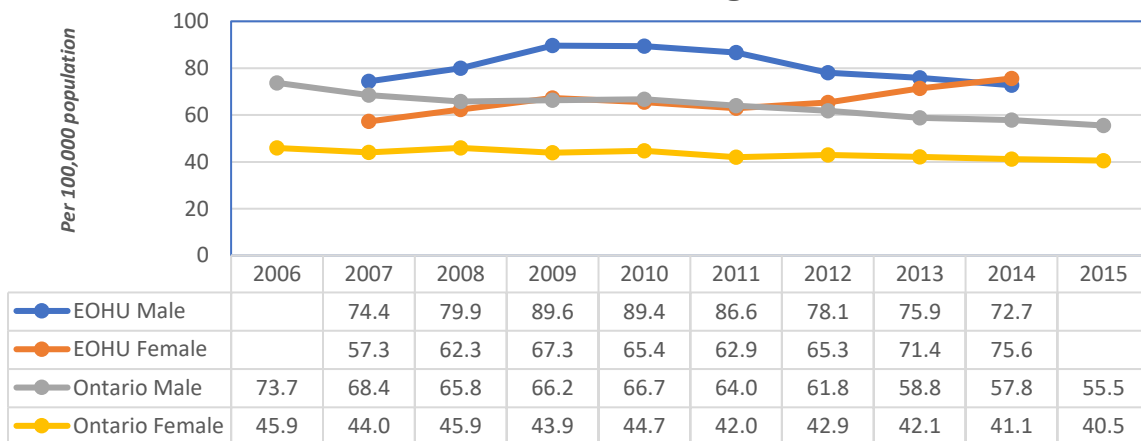


EOHU*: Three year average rate in EOHU area

Lung Cancer

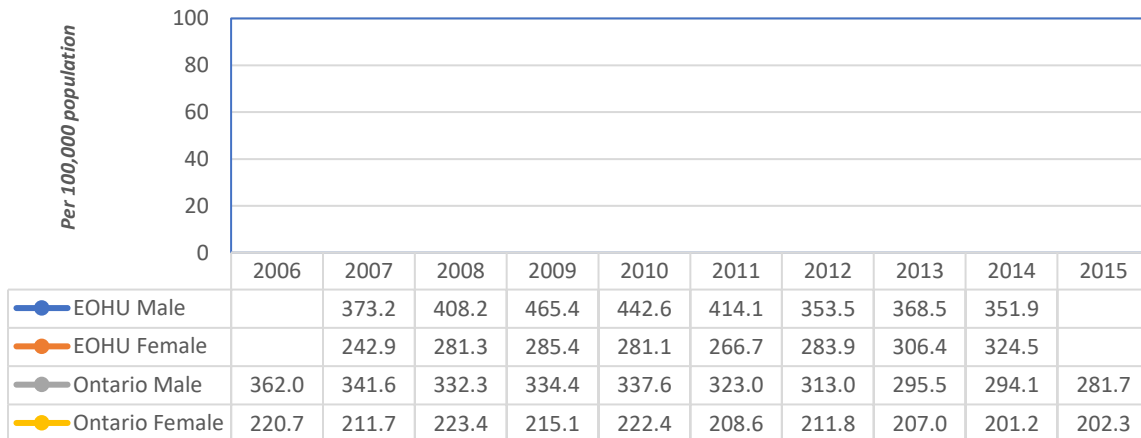
	S-Rate for All Age				ASMR for 65 Years & up			
	EOHU		Ontario		EOHU		Ontario	
	Male	Female	Male	Female	Male	Female	Male	Female
2006			73.7	45.9			362.0	220.7
2007	74.4	57.3	68.4	44.0	373.2	242.9	341.6	211.7
2008	79.9	62.3	65.8	45.9	408.2	281.3	332.3	223.4
2009	89.6	67.3	66.2	43.9	465.4	285.4	334.4	215.1
2010	89.4	65.4	66.7	44.7	442.6	281.1	337.6	222.4
2011	86.6	62.9	64.0	42.0	414.1	266.7	323.0	208.6
2012	78.1	65.3	61.8	42.9	353.5	283.9	313.0	211.8
2013	75.9	71.4	58.8	42.1	368.5	306.4	295.5	207.0
2014	72.7	75.6	57.8	41.1	351.9	324.5	294.1	201.2
2015			55.5	40.5			281.7	202.3

Age Standardized Mortality Rate for Lung Cancer, EOHU & Ontario, All Age, 2006-2015



EOHU*: Three year average rate in EOHU area

Age Standardized Mortality Rate for Lung Cancer, EOHU & Ontario, 65 Years+, 2006-2015

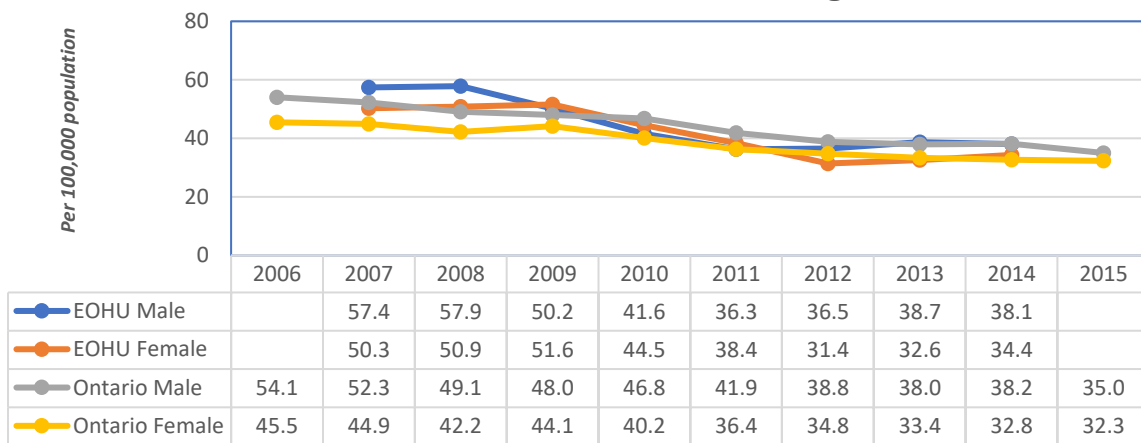


EOHU*: Three year average rate in EOHU area

Cerebrovascular diseases

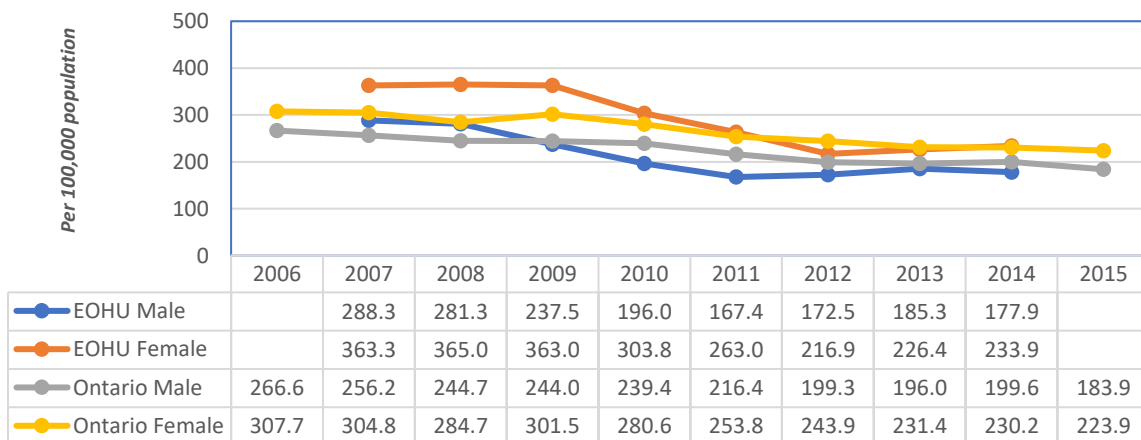
	S-Rate for All Age				ASMR for 65 Years & up			
	EOHU		Ontario		EOHU		Ontario	
	Male	Female	Male	Female	Male	Female	Male	Female
2006			54.1	45.5			266.6	307.7
2007	57.4	50.3	52.3	44.9	288.3	363.3	256.2	304.8
2008	57.9	50.9	49.1	42.2	281.3	365.0	244.7	284.7
2009	50.2	51.6	48.0	44.1	237.5	363.0	244.0	301.5
2010	41.6	44.5	46.8	40.2	196.0	303.8	239.4	280.6
2011	36.3	38.4	41.9	36.4	167.4	263.0	216.4	253.8
2012	36.5	31.4	38.8	34.8	172.5	216.9	199.3	243.9
2013	38.7	32.6	38.0	33.4	185.3	226.4	196.0	231.4
2014	38.1	34.4	38.2	32.8	177.9	233.9	199.6	230.2
2015			35.0	32.3			183.9	223.9

Age Standardized Mortality Rate for Cerebrovascular diseases, EOHU & Ontario, All Age, 2006-2015



EOHU*: Three year average rate in EOHU area

Age Specific Mortality Rate for Cerebrovascular diseases, EOHU & Ontario, 65 Years+, 2006-2015

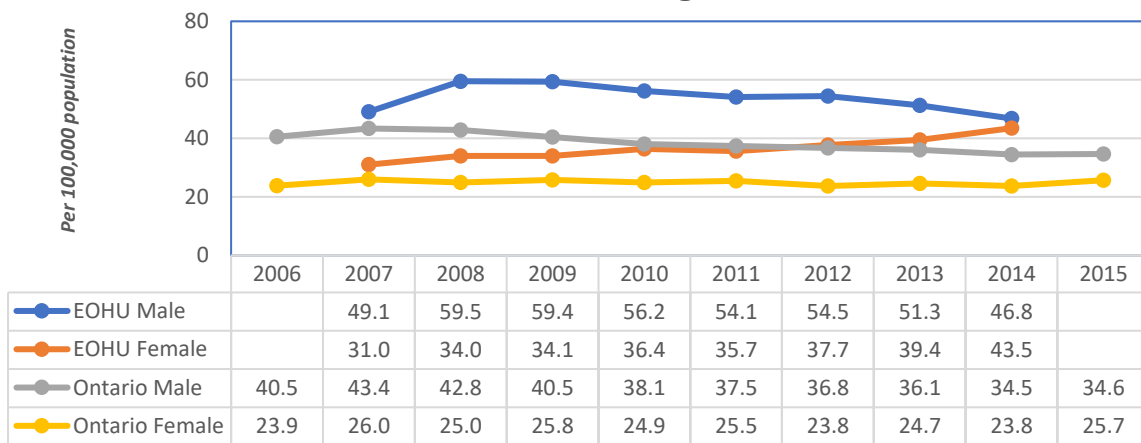


EOHU*: Three year average rate in EOHU area

Chronic Obstructive Pulmonary Disease (COPD)

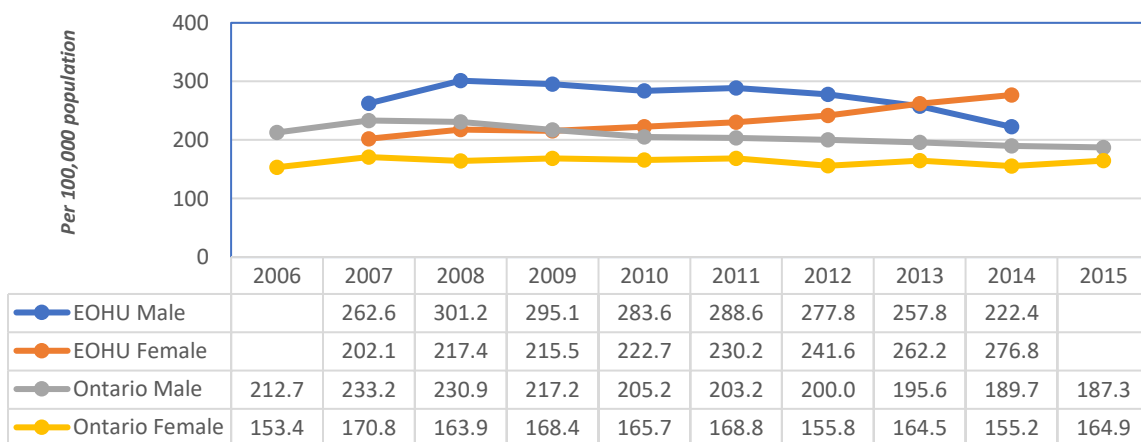
	S-Rate for All Age				ASMR for 65 Years & up			
	EOHU		Ontario		EOHU		Ontario	
	Male	Female	Male	Female	Male	Female	Male	Female
2006			40.5	23.9			212.7	153.4
2007	49.1	31.0	43.4	26.0	262.6	202.1	233.2	170.8
2008	59.5	34.0	42.8	25.0	301.2	217.4	230.9	163.9
2009	59.4	34.1	40.5	25.8	295.1	215.5	217.2	168.4
2010	56.2	36.4	38.1	24.9	283.6	222.7	205.2	165.7
2011	54.1	35.7	37.5	25.5	288.6	230.2	203.2	168.8
2012	54.5	37.7	36.8	23.8	277.8	241.6	200.0	155.8
2013	51.3	39.4	36.1	24.7	257.8	262.2	195.6	164.5
2014	46.8	43.5	34.5	23.8	222.4	276.8	189.7	155.2
2015			34.6	25.7			187.3	164.9

Age Standardized Mortality Rate for COPD,
EOHU & Ontario, All Age, 2006-2015



EOHU*: Three year average rate in EOHU area

Age Specific Mortality Rate for COPD, EOHU
& Ontario, 65 Years+, 2006-2015

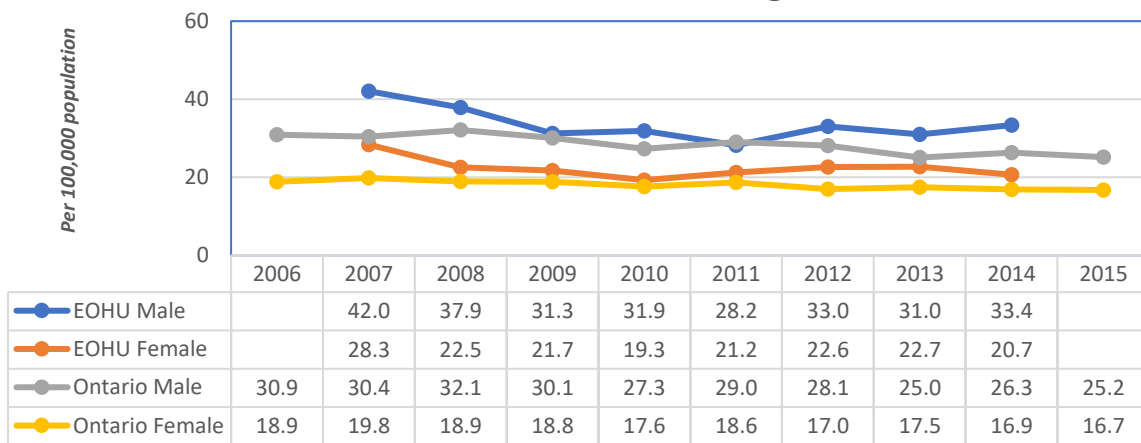


EOHU*: Three year average rate in EOHU area

Colorectal Cancer

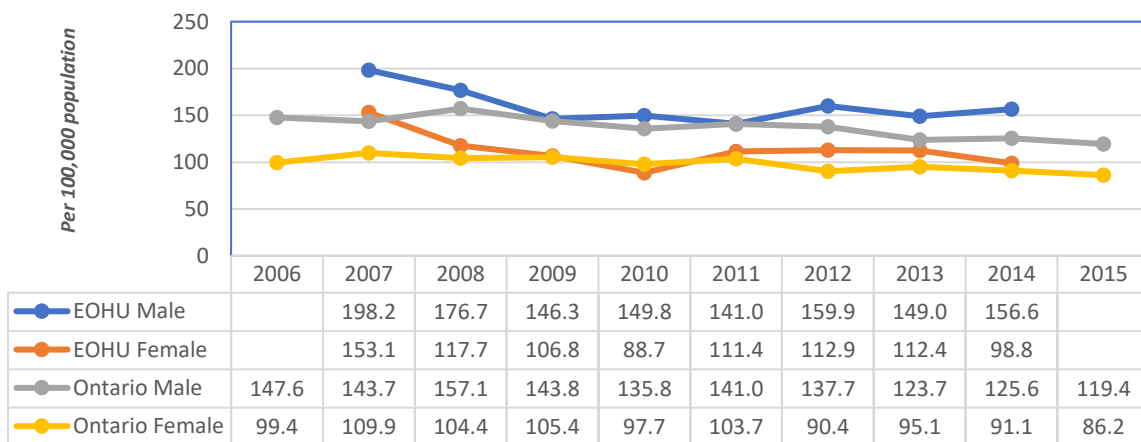
	S-Rate for All Age				ASMR for 65 Years & up			
	EOHU		Ontario		EOHU		Ontario	
	Male	Female	Male	Female	Male	Female	Male	Female
2006			30.9	18.9			147.6	99.4
2007	42.0	28.3	30.4	19.8	198.2	153.1	143.7	109.9
2008	37.9	22.5	32.1	18.9	176.7	117.7	157.1	104.4
2009	31.3	21.7	30.1	18.8	146.3	106.8	143.8	105.4
2010	31.9	19.3	27.3	17.6	149.8	88.7	135.8	97.7
2011	28.2	21.2	29.0	18.6	141.0	111.4	141.0	103.7
2012	33.0	22.6	28.1	17.0	159.9	112.9	137.7	90.4
2013	31.0	22.7	25.0	17.5	149.0	112.4	123.7	95.1
2014	33.4	20.7	26.3	16.9	156.6	98.8	125.6	91.1
2015			25.2	16.7			119.4	86.2

Age Standardized Mortality Rate for Colorectal Cancer, EOHU & Ontario, All Age, 2006-2015



EOHU*: Three year average rate in EOHU area

Age Specific Mortality Rate for Colorectal Cancer, EOHU & Ontario, 65 Years+, 2006-2015

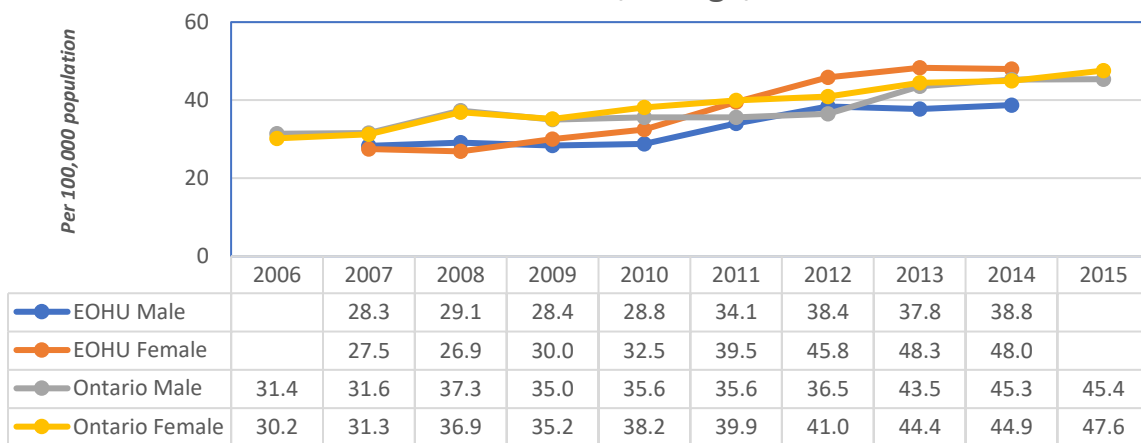


EOHU*: Three year average rate in EOHU area

Dementia (F00-F03)

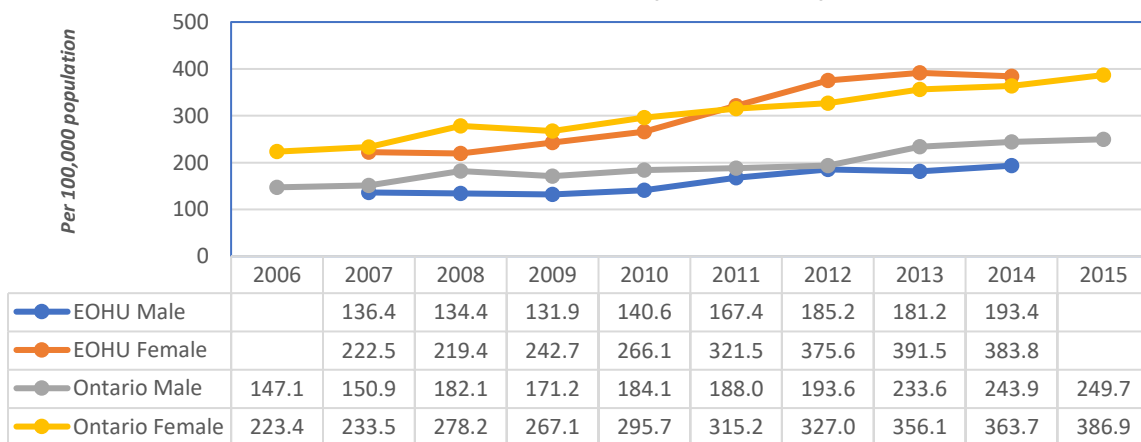
	S-Rate for All Age				ASMR for 65 Years & up			
	EOHU		Ontario		EOHU		Ontario	
	Male	Female	Male	Female	Male	Female	Male	Female
2006			31.4	30.2			147.1	223.4
2007	28.3	27.5	31.6	31.3	136.4	222.5	150.9	233.5
2008	29.1	26.9	37.3	36.9	134.4	219.4	182.1	278.2
2009	28.4	30.0	35.0	35.2	131.9	242.7	171.2	267.1
2010	28.8	32.5	35.6	38.2	140.6	266.1	184.1	295.7
2011	34.1	39.5	35.6	39.9	167.4	321.5	188.0	315.2
2012	38.4	45.8	36.5	41.0	185.2	375.6	193.6	327.0
2013	37.8	48.3	43.5	44.4	181.2	391.5	233.6	356.1
2014	38.8	48.0	45.3	44.9	193.4	383.8	243.9	363.7
2015			45.4	47.6			249.7	386.9

Age Standardized Mortality Rate for Dementia,
EOHU & Ontario, All Age, 2006-2015



EOHU*: Three year average rate in EOHU area

Age Specific Mortality Rate for Dementia,
EOHU & Ontario, 65 Years+, 2006-2015

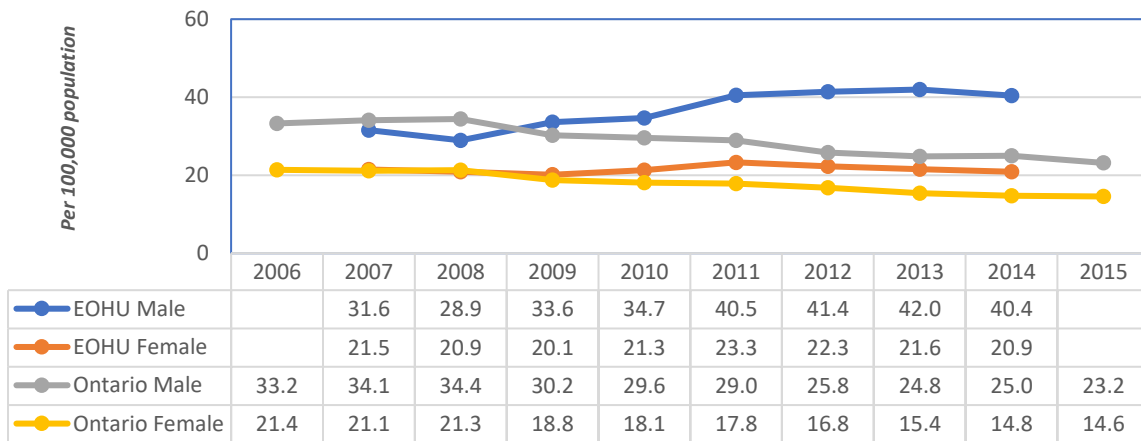


EOHU*: Three year average rate in EOHU area

Diabetes mellitus

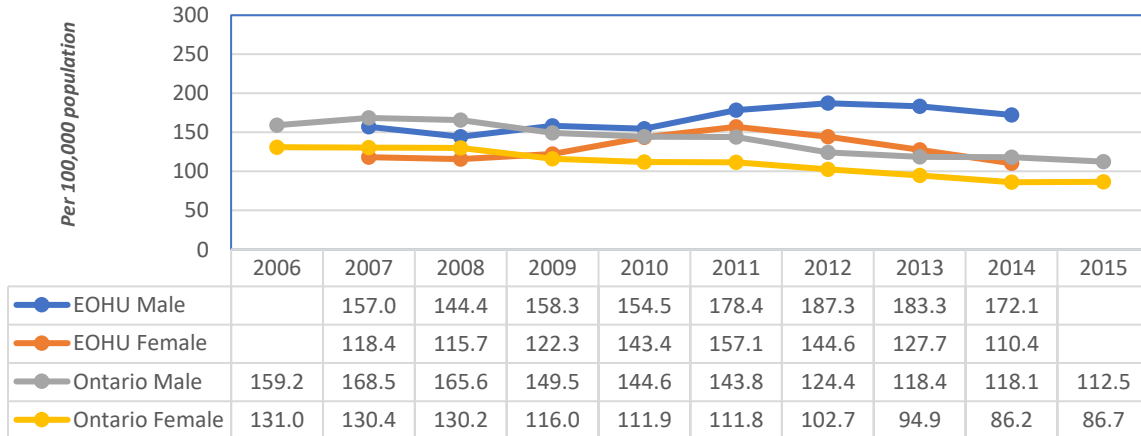
	S-Rate for All Age				ASMR for 65 Years & up			
	EOHU		Ontario		EOHU		Ontario	
	Male	Female	Male	Female	Male	Female	Male	Female
2006			33.2	21.4			159.2	131.0
2007	31.6	21.5	34.1	21.1	157.0	118.4	168.5	130.4
2008	28.9	20.9	34.4	21.3	144.4	115.7	165.6	130.2
2009	33.6	20.1	30.2	18.8	158.3	122.3	149.5	116.0
2010	34.7	21.3	29.6	18.1	154.5	143.4	144.6	111.9
2011	40.5	23.3	29.0	17.8	178.4	157.1	143.8	111.8
2012	41.4	22.3	25.8	16.8	187.3	144.6	124.4	102.7
2013	42.0	21.6	24.8	15.4	183.3	127.7	118.4	94.9
2014	40.4	20.9	25.0	14.8	172.1	110.4	118.1	86.2
2015			23.2	14.6			112.5	86.7

Age Standardized Mortality Rate for Diabetes mellitus, EOHU & Ontario, All Age, 2006-2015



EOHU*: Three year average rate in EOHU area

Age Specific Mortality Rate for Diabetes mellitus, EOHU & Ontario, 65 Years+, 2006-2015



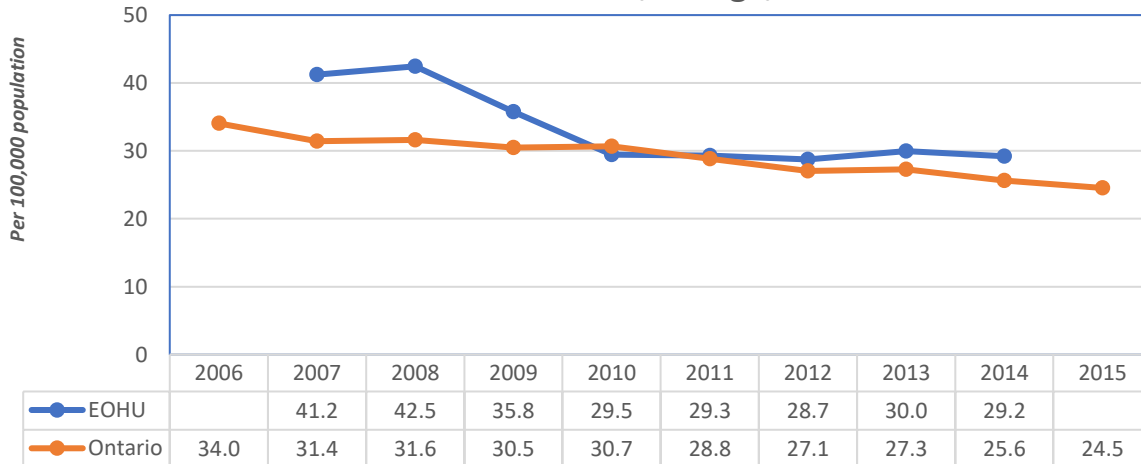
EOHU*: Three year average rate in EOHU area

Prostate Cancer

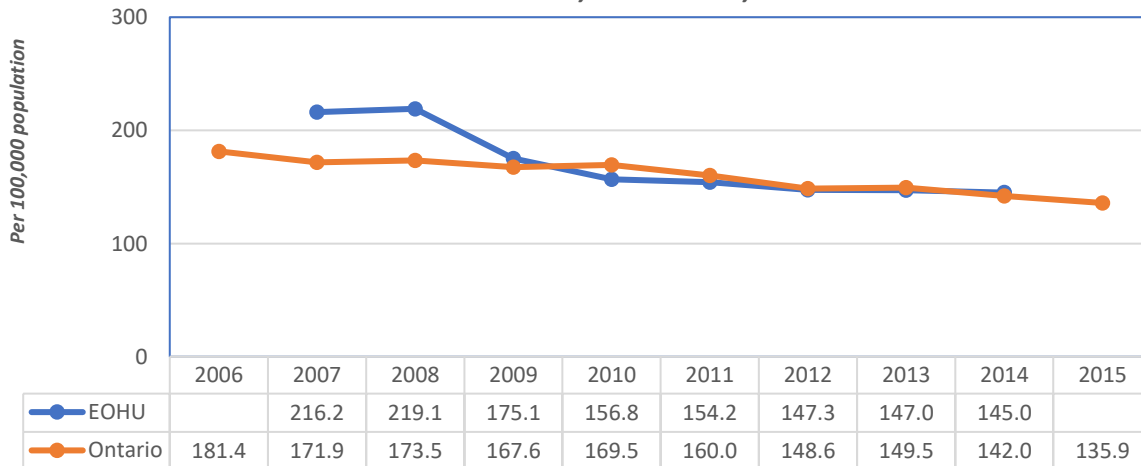
S-Rate for All Age		
	EOHU	Ontario
2006		34.0
2007	41.2	31.4
2008	42.5	31.6
2009	35.8	30.5
2010	29.5	30.7
2011	29.3	28.8
2012	28.7	27.1
2013	30.0	27.3
2014	29.2	25.6
2015		24.5

ASMR for 65 Years & up		
	EOHU	Ontario
2006		181.4
2007	216.2	171.9
2008	219.1	173.5
2009	175.1	167.6
2010	156.8	169.5
2011	154.2	160.0
2012	147.3	148.6
2013	147.0	149.5
2014	145.0	142.0
2015		135.9

Age Standardized Mortality Rate for Prostate Cancer, EOHU & Ontario, All Age, 2006-2015



Age Specific Mortality Rate for Prostate Cancer, EOHU & Ontario, 65 Years+, 2006-2015

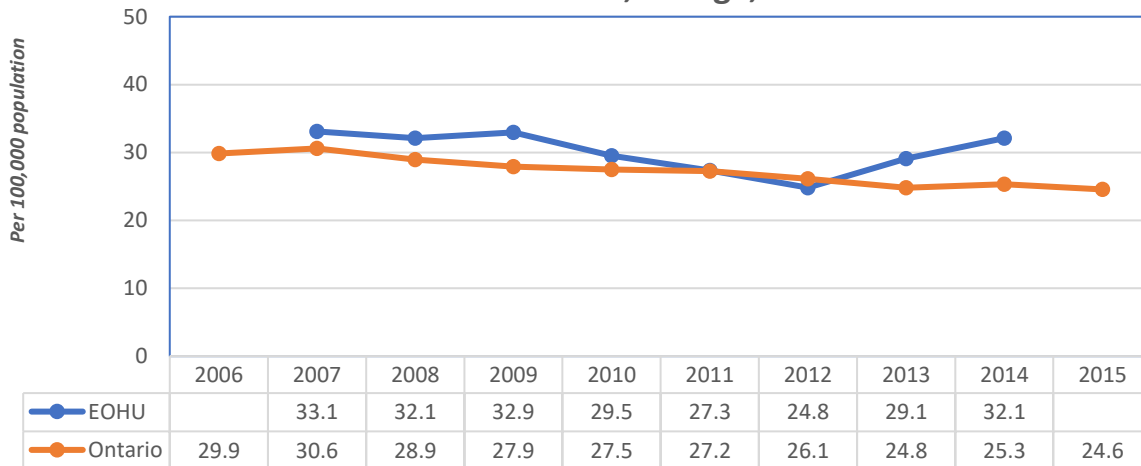


Breast Cancer

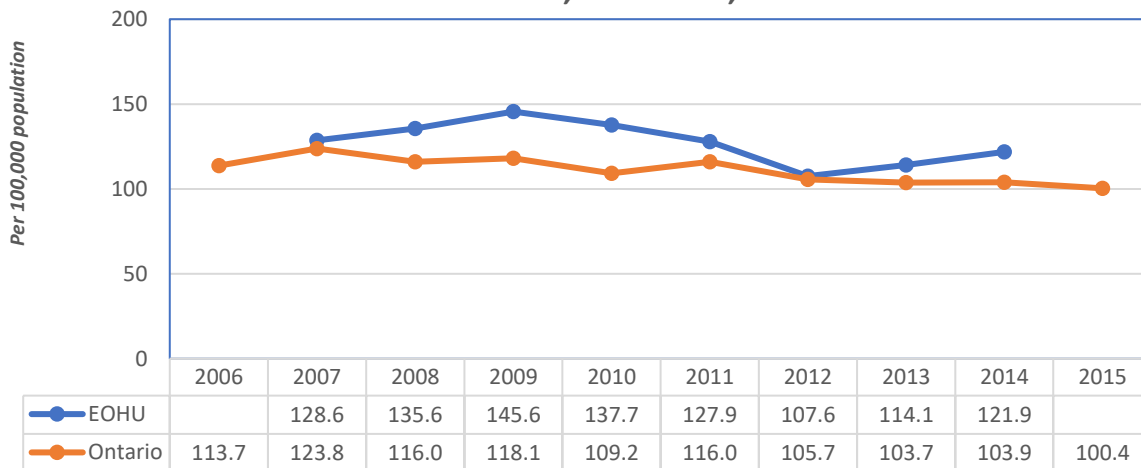
S-Rate for All Age		
	EOHU	Ontario
2006		29.9
2007	33.1	30.6
2008	32.1	28.9
2009	32.9	27.9
2010	29.5	27.5
2011	27.3	27.2
2012	24.8	26.1
2013	29.1	24.8
2014	32.1	25.3
2015		24.6

ASMR for 65 Years & up		
	EOHU	Ontario
2006		113.7
2007	128.6	123.8
2008	135.6	116.0
2009	145.6	118.1
2010	137.7	109.2
2011	127.9	116.0
2012	107.6	105.7
2013	114.1	103.7
2014	121.9	103.9
2015		100.4

Age Standardized Mortality Rate for Breast Cancer, EOHU & Ontario, All Age, 2006-2015



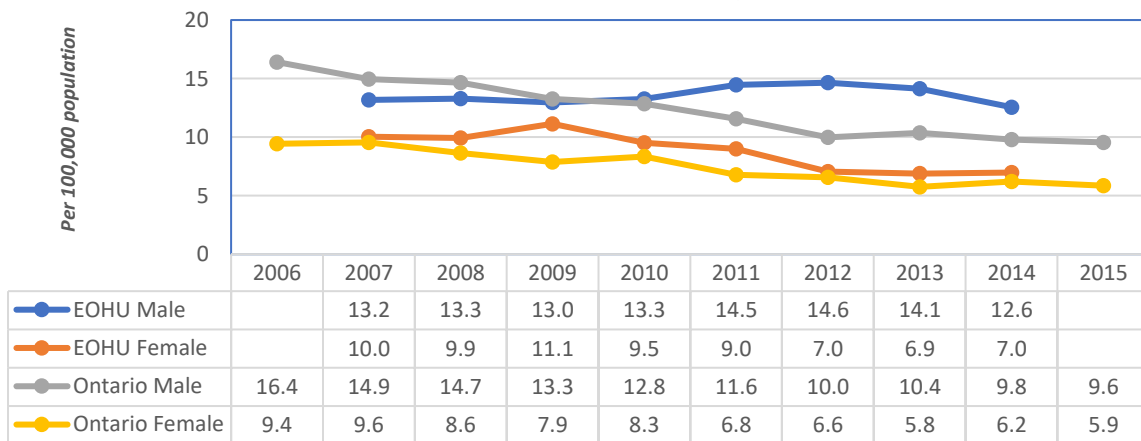
Age Specific Mortality Rate for Breast Cancer, EOHU & Ontario, 65 Years+, 2006-2015



Renal failure

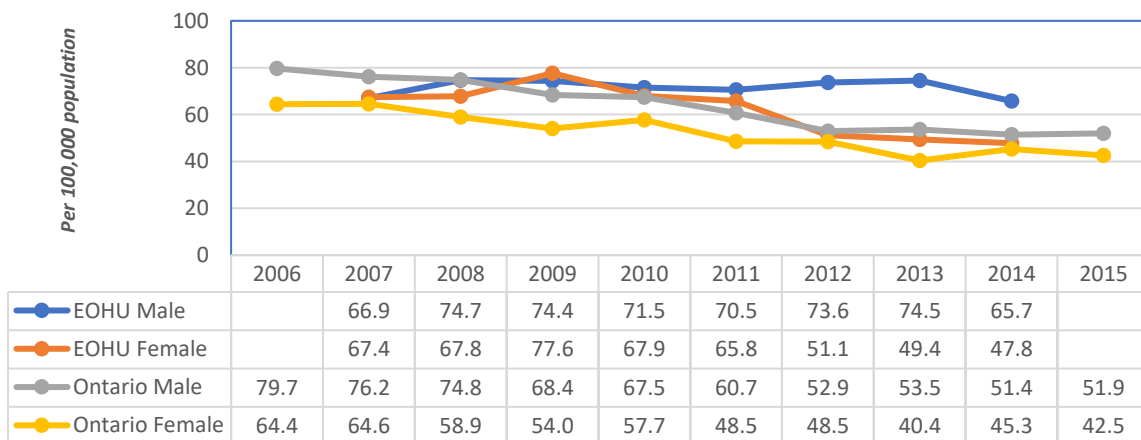
	S-Rate for All Age				ASMR for 65 Years & up			
	EOHU		Ontario		EOHU		Ontario	
	Male	Female	Male	Female	Male	Female	Male	Female
2006			16.4	9.4			79.7	64.4
2007	13.2	10.0	14.9	9.6	66.9	67.4	76.2	64.6
2008	13.3	9.9	14.7	8.6	74.7	67.8	74.8	58.9
2009	13.0	11.1	13.3	7.9	74.4	77.6	68.4	54.0
2010	13.3	9.5	12.8	8.3	71.5	67.9	67.5	57.7
2011	14.5	9.0	11.6	6.8	70.5	65.8	60.7	48.5
2012	14.6	7.0	10.0	6.6	73.6	51.1	52.9	48.5
2013	14.1	6.9	10.4	5.8	74.5	49.4	53.5	40.4
2014	12.6	7.0	9.8	6.2	65.7	47.8	51.4	45.3
2015			9.6	5.9			51.9	42.5

Age Standardized Mortality Rate for Renal failure, EOHU & Ontario, All Age, 2006-2015



EOHU*: Three year average rate in EOHU area

Age Specific Mortality Rate for Renal failure, EOHU & Ontario, 65 Years+, 2006-2015

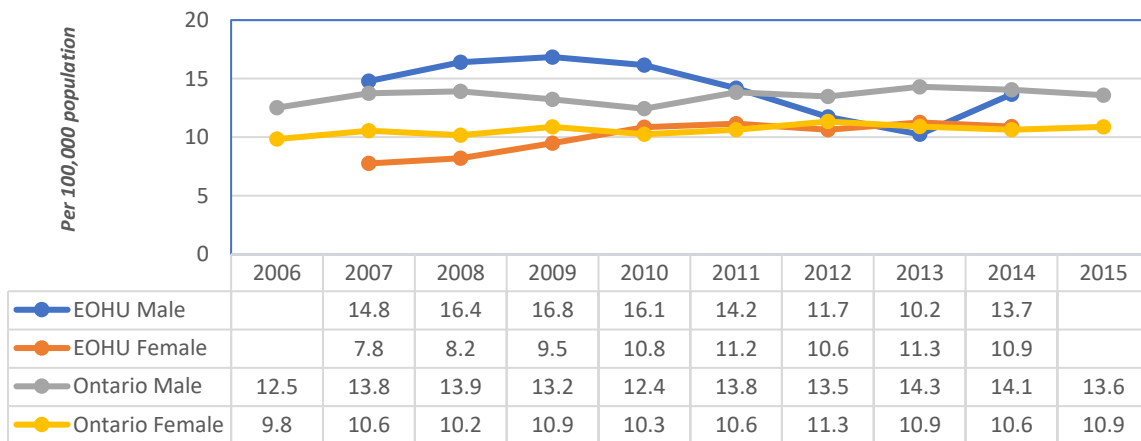


EOHU*: Three year average rate in EOHU area

Pancreatic Cancer

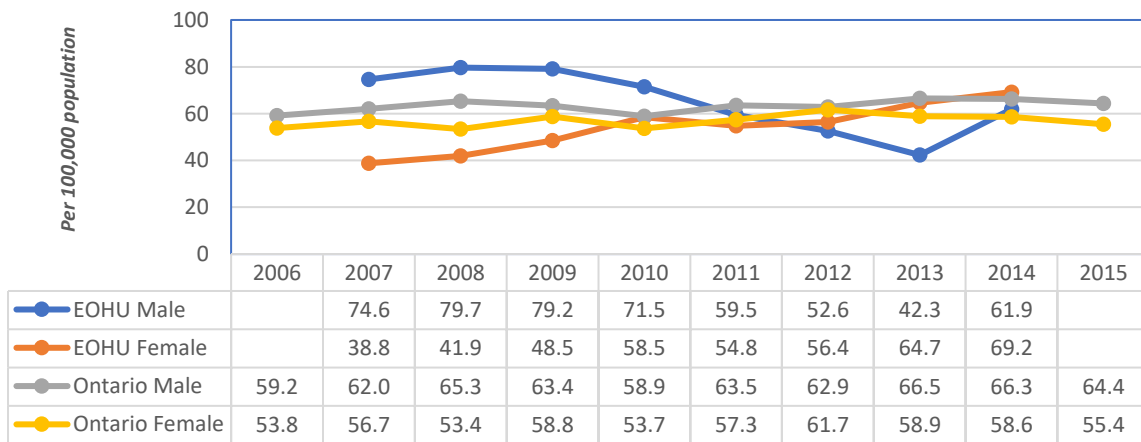
	S-Rate for All Age				ASMR for 65 Years & up			
	EOHU		Ontario		EOHU		Ontario	
	Male	Female	Male	Female	Male	Female	Male	Female
2006			12.5	9.8			59.2	53.8
2007	14.8	7.8	13.8	10.6	74.6	38.8	62.0	56.7
2008	16.4	8.2	13.9	10.2	79.7	41.9	65.3	53.4
2009	16.8	9.5	13.2	10.9	79.2	48.5	63.4	58.8
2010	16.1	10.8	12.4	10.3	71.5	58.5	58.9	53.7
2011	14.2	11.2	13.8	10.6	59.5	54.8	63.5	57.3
2012	11.7	10.6	13.5	11.3	52.6	56.4	62.9	61.7
2013	10.2	11.3	14.3	10.9	42.3	64.7	66.5	58.9
2014	13.7	10.9	14.1	10.6	61.9	69.2	66.3	58.6
2015			13.6	10.9			64.4	55.4

Age Standardized Mortality Rate for Pancreatic Cancer, EOHU & Ontario, All Age, 2006-2015



EOHU*: Three year average rate in EOHU area

Age Specific Mortality Rate for Pancreatic Cancer, EOHU & Ontario, 65 Years+, 2006-2015

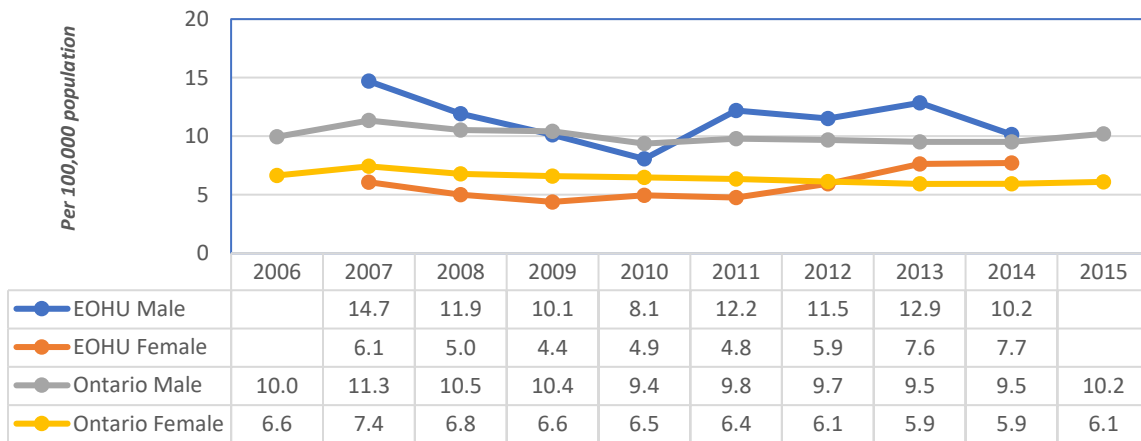


EOHU*: Three year average rate in EOHU area

Non-Hodgkin's Lymphoma

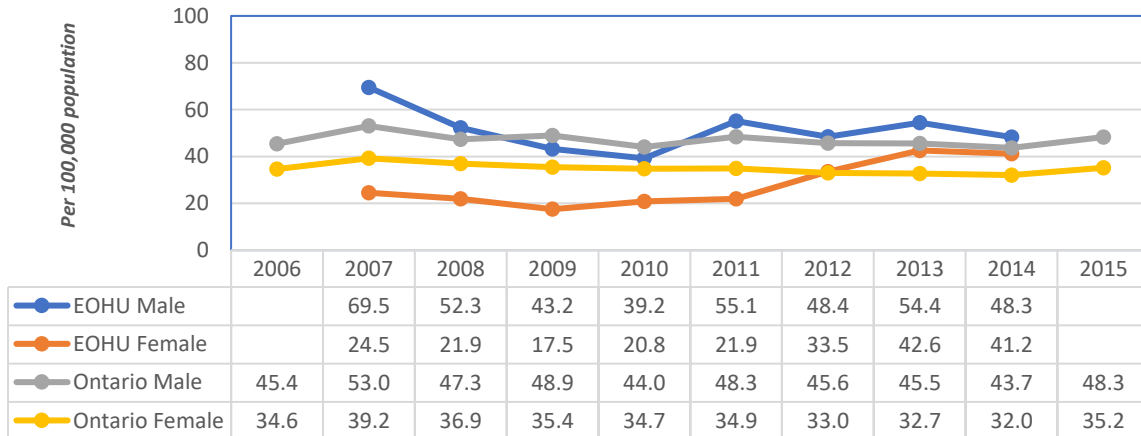
	S-Rate for All Age				ASMR for 65 Years & up			
	EOHU		Ontario		EOHU		Ontario	
	Male	Female	Male	Female	Male	Female	Male	Female
2006			10.0	6.6			45.4	34.6
2007	14.7	6.1	11.3	7.4	69.5	24.5	53.0	39.2
2008	11.9	5.0	10.5	6.8	52.3	21.9	47.3	36.9
2009	10.1	4.4	10.4	6.6	43.2	17.5	48.9	35.4
2010	8.1	4.9	9.4	6.5	39.2	20.8	44.0	34.7
2011	12.2	4.8	9.8	6.4	55.1	21.9	48.3	34.9
2012	11.5	5.9	9.7	6.1	48.4	33.5	45.6	33.0
2013	12.9	7.6	9.5	5.9	54.4	42.6	45.5	32.7
2014	10.2	7.7	9.5	5.9	48.3	41.2	43.7	32.0
2015			10.2	6.1			48.3	35.2

Age Standardized Mortality Rate for Non-Hodgkin's lymphoma, EOHU & Ontario, All Age, 2006-2015



EOHU*: Three year average rate in EOHU area

Age Specific Mortality Rate for Non-Hodgkin's lymphoma, EOHU & Ontario, 65 Years+, 2006-2015

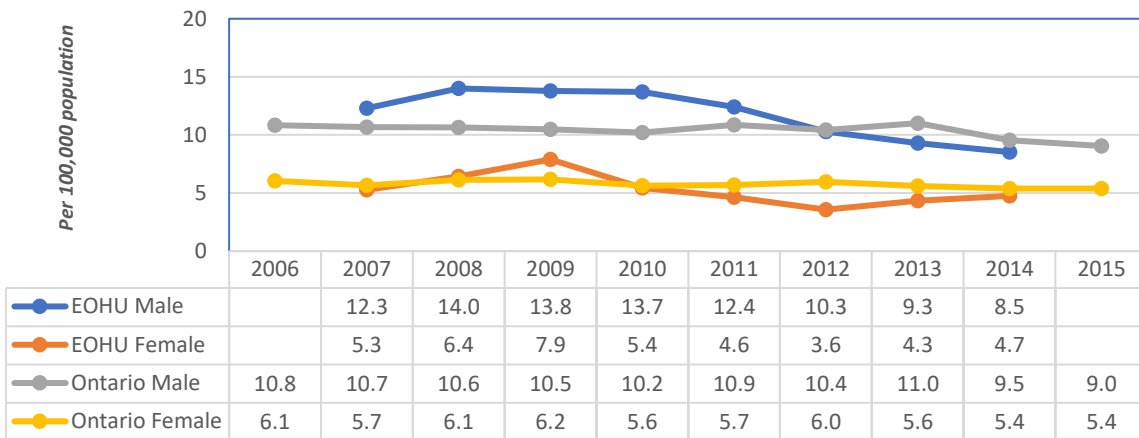


EOHU*: Three year average rate in EOHU area

Leukemia

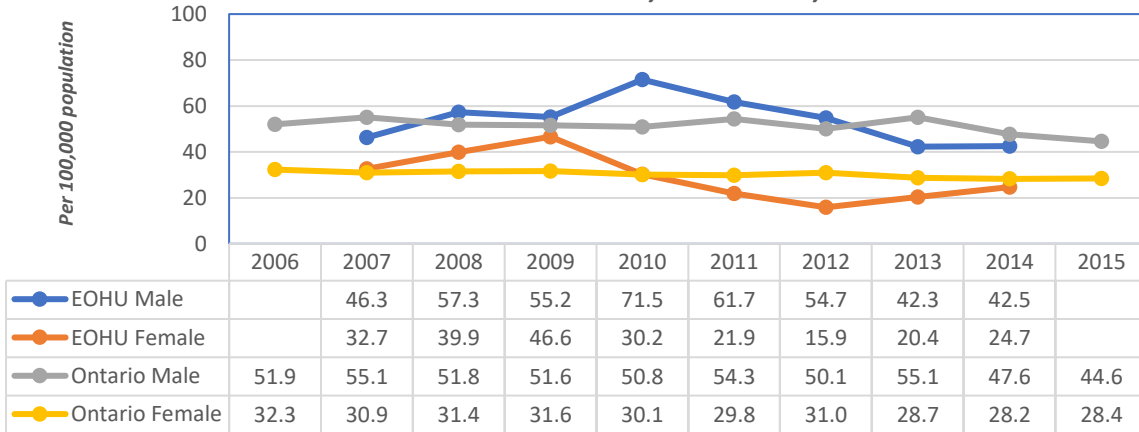
	S-Rate for All Age				ASMR for 65 Years & up			
	EOHU		Ontario		EOHU		Ontario	
	Male	Female	Male	Female	Male	Female	Male	Female
2006			10.8	6.1			51.9	32.3
2007	12.3	5.3	10.7	5.7	46.3	32.7	55.1	30.9
2008	14.0	6.4	10.6	6.1	57.3	39.9	51.8	31.4
2009	13.8	7.9	10.5	6.2	55.2	46.6	51.6	31.6
2010	13.7	5.4	10.2	5.6	71.5	30.2	50.8	30.1
2011	12.4	4.6	10.9	5.7	61.7	21.9	54.3	29.8
2012	10.3	3.6	10.4	6.0	54.7	15.9	50.1	31.0
2013	9.3	4.3	11.0	5.6	42.3	20.4	55.1	28.7
2014	8.5	4.7	9.5	5.4	42.5	24.7	47.6	28.2
2015			9.0	5.4			44.6	28.4

Age Standardized Mortality Rate for Leukemia, EOHU & Ontario, All Age, 2006-2015



EOHU*: Three year average rate in EOHU area

Age Specific Mortality Rate for Leukemia, EOHU & Ontario, 65 Years+, 2006-2015



EOHU*: Three year average rate in EOHU area